

Hans Van de Bovenkamp

One of a Kind, Estate Entry Gates



www.HVDBGates.com



"Hans at Gate" 1986 Painted Steel Tillson, NY

Hans Van de Bovenkamp

HVDB Gates ~ The Liminal Gate Company

www.HVDBGates.com



Hans Van de Bovenkamp with master craftsman Kevin Miller

Hans Van de Bovenkamp is an internationally renowned contemporary abstract sculptor. He has produced monumental sculptures for more than 50 years, and completed over 200 private commissions. His work is held in the collections of both public and private organizations within the civic realm, as well as at private residences. While his sculpture follows the abstract style of the 10th Street Movement of the 60s in NYC, he has recently fused several of his past series into this completely new body of work: sculptures with both form and function. The gates leverage Van de Bovenkamp's ability to create meaningful forms when working in the round, coupled with his celebrated material fluidity.

Hans's awareness of, and affinity for, the gate stems from his early childhood in Holland. In the Netherlands, cow pastures are usually separated by trenches rather than fences. The trenches served both to contain the cows and dry the fields, so grass could grow in areas often below sea level. Every field had to have an access point, whether to move the cows between fields or bring in equipment to maintain the land. Each of these access points are controlled by a gate. Consequently, when looking across a series of fields there are times when you only see dozens of gates. More interestingly, what he realized was that what a gate looked like from a distance, in both form and composition, altered as he got closer. This made a lifelong impression on the soon to be artist.

In 1986, Hans made his first gate for his own house and studio in Tillson, NY. He created it to serve multiple purposes. First, it gave his property a unique and clear identity, more clear than any street number. Second, when wanting privacy to provide uninterrupted creative time, he could close the gate, subtly informing visitors that they needed to be announced before visiting. Finally, it offered an introduction to his personal aesthetic.

Gates are usually a transition point from a public to a private space, making them a "liminal" point, a point of transformation. Hans has always felt, for those individuals who want a unique introduction to their personal space (home, property or place of business), there is no better symbol than that of a gate. The gate is in effect the embrace of the owner to welcome their visitors to the environment they have created.

In continuing to broaden his creative portfolio, Van de Bovenkamp has decided that both the element of motion in his art, as well as the utilitarian nature of a gate, makes this new endeavor one of his most practical and interesting. To make the gates function with state of the art features, Hans has teamed up with the East Hampton Gate Company to ensure the gates functionally are superior to any other gate available. Hence we introduce you to The Liminal Gate Company.



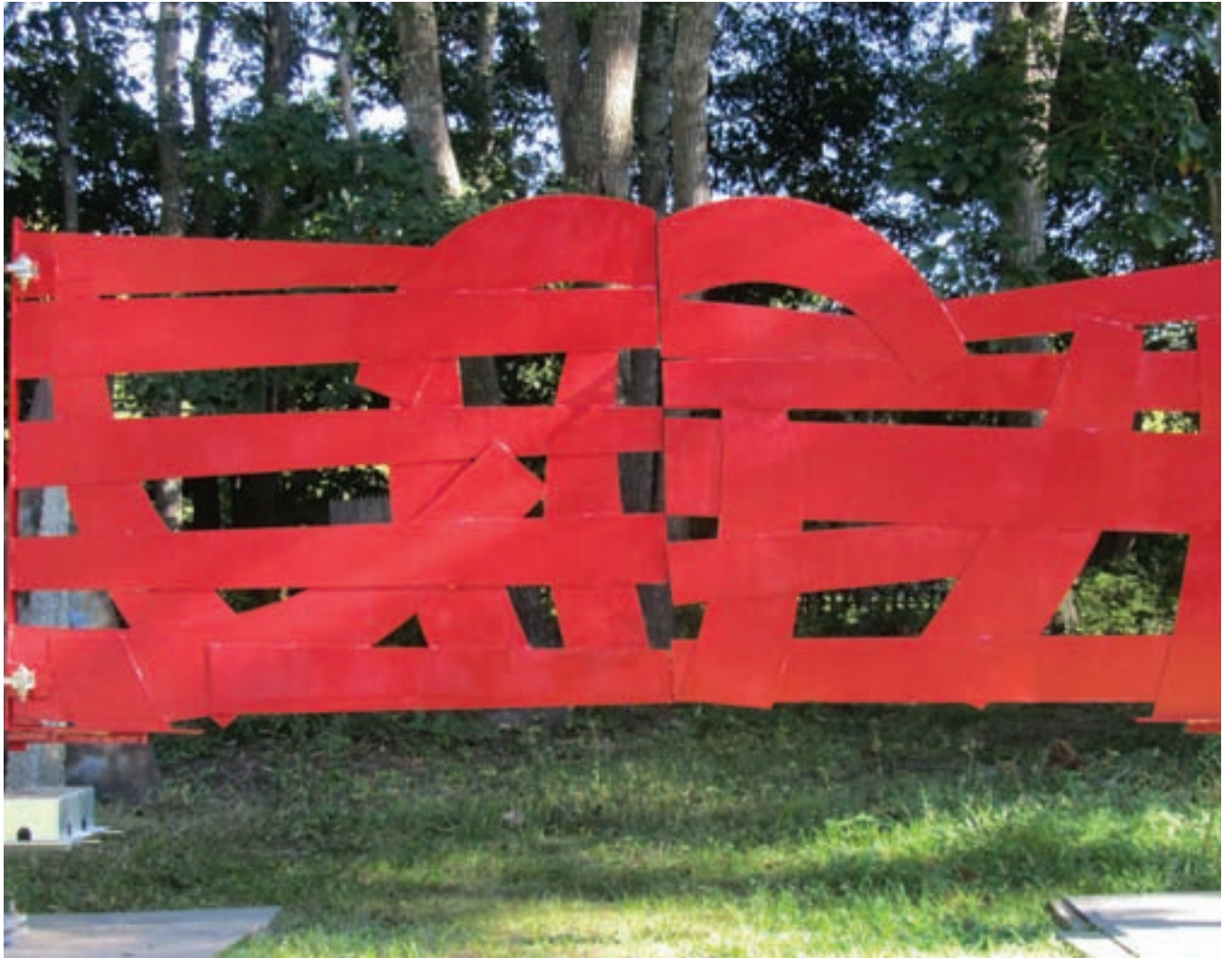
"Menhir Passage Gate" 2015 280" x 96" x 38" Stainless Steel
Artists' Personal Collection Sagaponack, NY



"Stonehenge Gate" 2015 Stainless Steel



"Mistral Wind Gate" 2016 280" x 96" x 38" Stainless Steel
Artists' Personal Collection Sagaponack, NY



"Red Corral Gate" 2016 156" x 72" x 12" Stainless Steel
Artists' Personal Collection Sagaponack, NY



"Sagaponack Gate" Detail 2014 Aluminum with Stainless Steel Columns



"Sagaponack Gate" 2014 24' x 7' x 1' Aluminum with Stainless Steel Columns
Sagaponack, NY



"Grass in the Wind" Detail 2013 Painted Stainless Steel • Brown



"Grass in the Wind" 2013 24' x 7' x 1' Painted Stainless Steel
Commissioned by Alan Sussman & Annie Blythe Woodstock, NY

Gate Concepts



"Gate Concept" Model 2015 Bronze Patina



"Gate Concept" Model 2013 Painted Stainless Steel • Green



"Grass in the Wind" Model 2013 24' x 7' x 1' Painted Stainless Steel
Commisioned by Alan & Annie Sussman Woodstock, NY



"Circles & Waves Gate Concept" Model 2013 Painted Stainless Steel • White



"Waves Gate Concept" Model 2013 Painted Stainless Steel • White

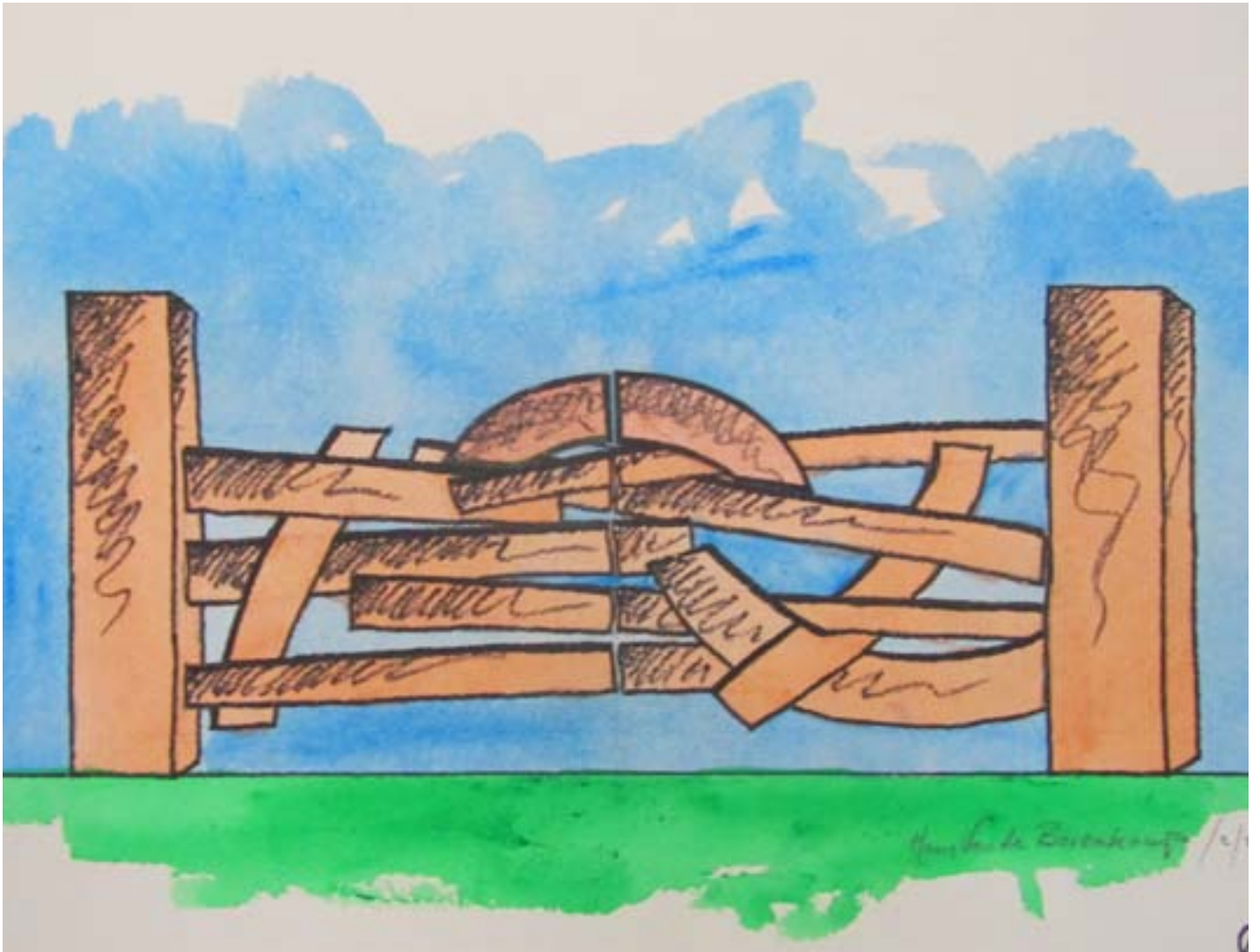


"Gate Concept" Model 2013 Painted Stainless Steel • Brown

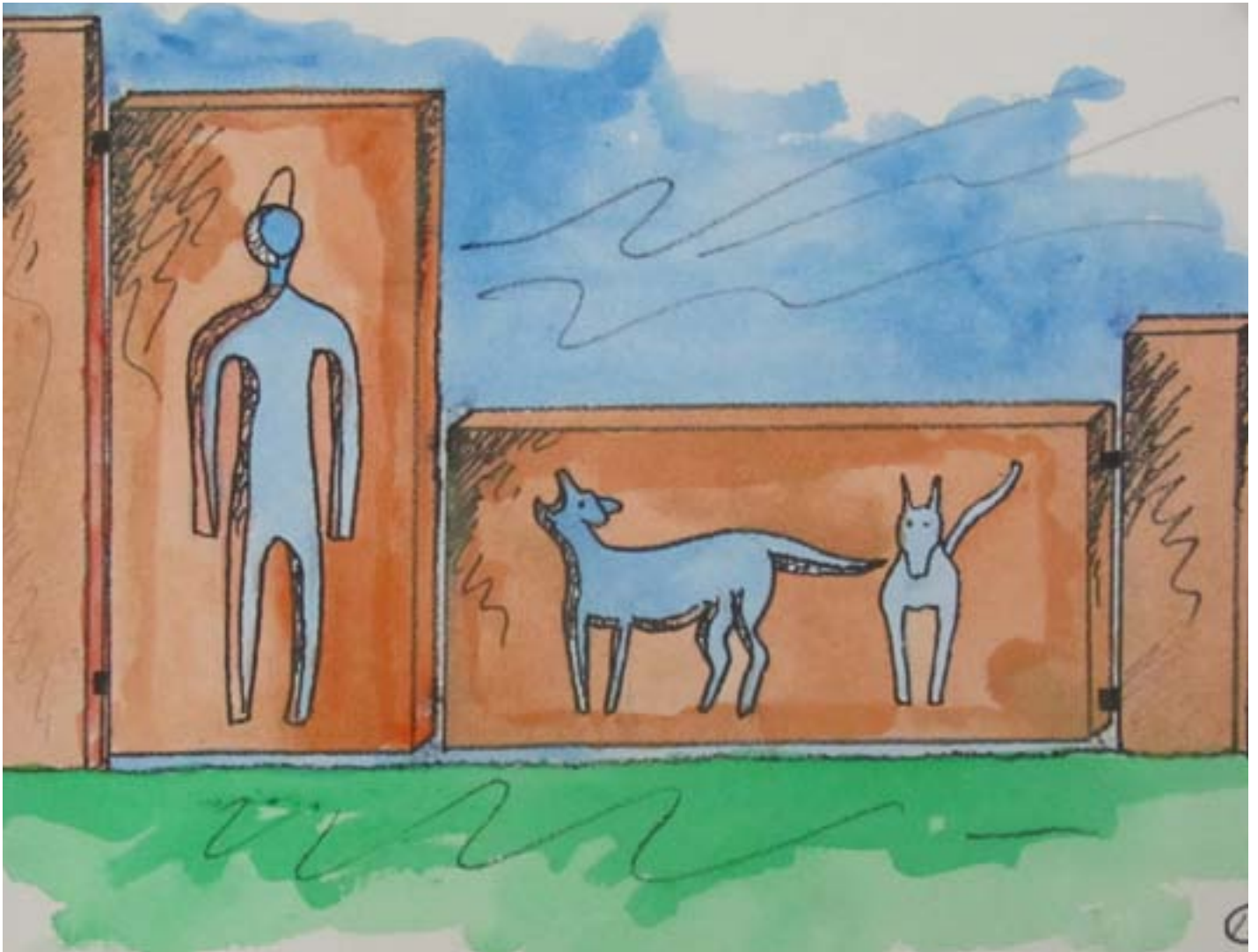


"Gate Concept" Model 2013 Painted Stainless Steel • Red

Gate Concept Drawings



"Gate Drawing Concept #1" 2016 Watercolor on Paper



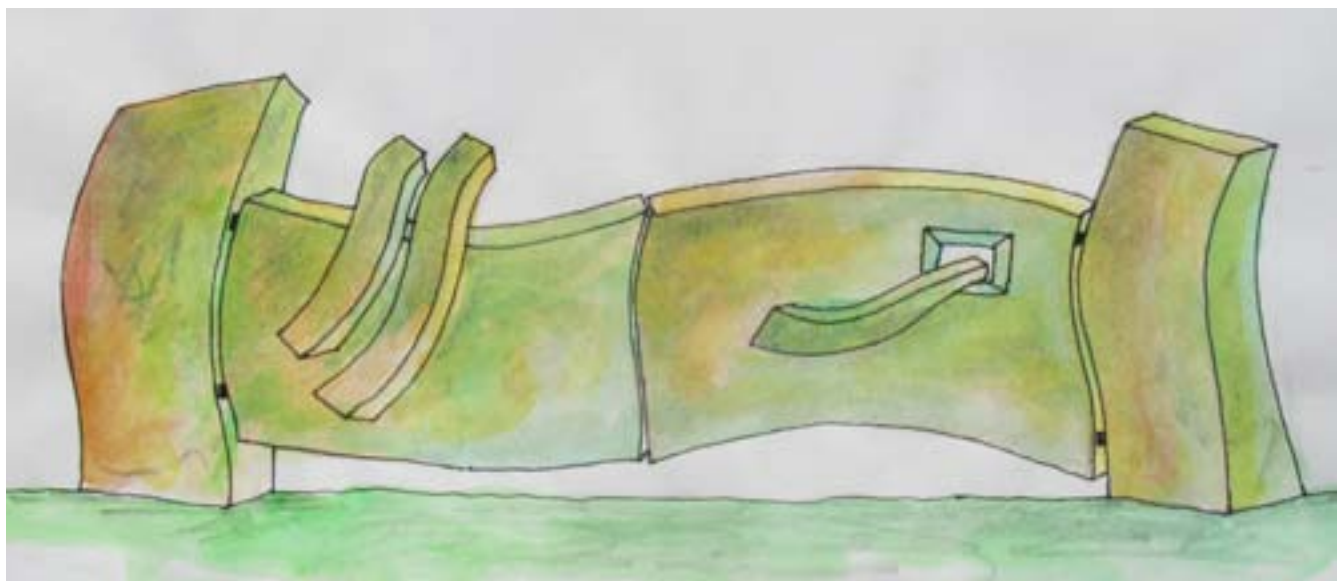
"Gate Drawing Concept #2" 2016 Watercolor on Paper



"Gate Drawing Concept #3" 2016 Watercolor on Paper



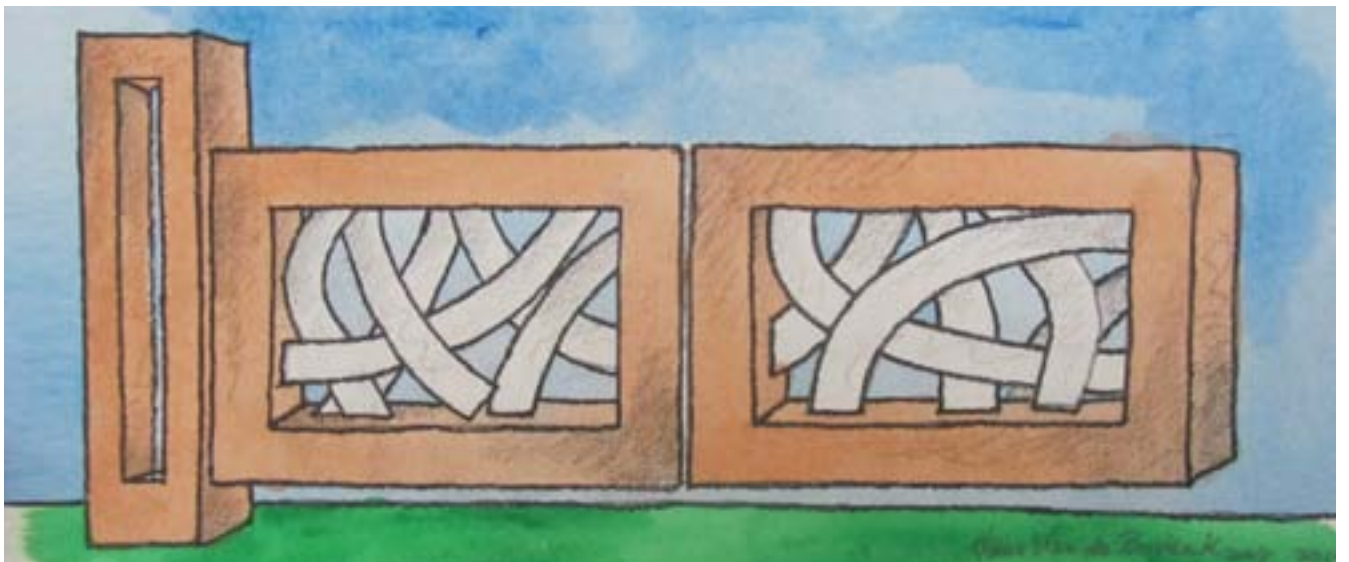
"Gate Drawing Concept #4" 2015 Watercolor on Paper



"Gate Drawing Concept #5" 2015 Watercolor on Paper



"Gate Drawing Concept #6" 2016 Watercolor on Paper



"Gate Drawing Concept #7" 2016 Watercolor on Paper

About The Artist

Hans Van de Bovenkamp is a contemporary abstract sculptor and an architectural designer. He has earned an international reputation over the past 50 years for designing, fabricating, installing and maintaining unique sculptures, fountains and gates in collaboration with architects and designers. His works can be seen in hundreds of public, civic, corporate and private collections.

ARTIST STATEMENT

"For me, making sculpture is both a spiritual and an artistic act. The studio is my playground, my laboratory, my sanctuary, where I practice and experiment with sculptural ideas. When I am working I am truly living in the present moment: focused and aware of choices as I make them, functioning in an elevated state between the conscious and the subconscious. Over time, I have been fortunate to gather together enough skill and vision to realize my ideas as they have come into my heart. Art for me is a way of life, not just a passion."



"Confluence" 1976 Stainless Steel 30' x 22" Sidney, NE

"Trinity" 2001 26'H x 24'Dia
Stainless Steel
Columbia, MD



"Manhattan Portal" 2011 Bronze 120"H x 408"W x 72"D



"Stella In The Wind"
2007 Bronze
12'H x 15'W x 15'D
Private Collection
Bridgehampton, NY



"Flight" 2005
Corten Steel
27'H x 25' Dia
Private Collection
Roanoke, VA



"Lady Grace" 2015
Stainless Steel
10.5'H x 4' Dia.
Grace Building Lobby
New York, NY



"Red Gateway " 1986
Painted Stainless Steel
16' H x 16' Dia
Oklahoma City, OK

Hans Van de Bovenkamp

Selected Solo Exhibitions

2016 Louis Meisel Gallery, New York, New York
 2014 Illinois Wesleyan University Campus
 2013 Adelphi University, Garden City, NY
 2013 Samuel Lynne Gallery, Dallas, Texas
 2011 Louis Meisel Gallery, New York, New York
 2011 Bernarducci Meisel Gallery, New York, New York
 2008 Goldman Warehouse, Wynwood District, Florida
 2007 Sculpturesite Gallery, San Francisco, California
 2007 Basel Miami Art Fair,
 Goldman Warehouse, Miami, , Florida
 2007 Basel Miami Art Fair, Gary Nader Fine Art, Miami, FL
 2006 Danubiana Meulensteen Museum,
 Bratislava, Slovakia
 2005-06 Grounds for Sculpture, Hamilton, New Jersey
 2003 Louis Meisel Gallery, New York, New York
 2003 Bernarducci Meisel Gallery, New York, New York
 2003 Sagaponack Sculpture Fields, New York, New York
 1996 Michener Museum, Doylestown, Pennsylvania
 1996 Camino Real Gallery, Boca Raton, Florida
 1994 Quietude Gallery, East Brunswick, New Jersey
 1993 Elaine Benson Gallery, Bridgehampton, New York
 1992 Shidoni Contemporary Gallery, Tesuque, NM
 1981 Tiffany's, New York, New York
 1981 University of Missouri, Columbia, Missouri
 1979 Sculpture Center, New York, New York
 1976 Brooklyn Borough Hall, New York, New York
 1976 Arnot Art Museum, Elmira, New York
 1970 Jacksonville Children's Museum, Jacksonville, Florida
 1968 10 Downtown, New York, New York
 1965 Glassboro State College, Glassboro, New Jersey
 1963 New York University, New York, New York
 1961 University of Michigan, Ann Arbor, Michigan

Selected Group Exhibitions

2016 Southampton Arts Center, Southampton, NY
 2016 Philippe Staib Gallery, Shanghai, China
 2016 Samuel Lynne Gallery, Dallas, Texas
 2015 Illinois Wesleyan University Campus
 2015 Two Sculptors on The Stroll -
 Van de Bovenkamp and Vaadia, Rockford, IL
 2015 Pratt Institute, Brooklyn, NY
 2014 Philippe Staib Gallery, Taipei City, Taiwan
 2014 Art Sarasota, Seafare, Sarasota, Florida
 2013 Season of Sculpture, Sarasota Marine Park, Florida
 2012 Mark Borghi Gallery, Bridgehampton, New York
 2011 Art Fair, Shanghai, China
 2011 Gary Nader, Miami, Florida
 2009 Spanierman Gallery, East Hampton, NY
 2009 ArtHampton, Bridgehampton, NY
 2008 ArtHampton, Bridgehampton, NY
 2007 40 Years of Central Park, Lincoln Center, NY, NY
 2007 Pratt Institute, Brooklyn, NY
 2005 Sculpturesite Gallery, San Francisco, CA
 2000-04 City of Fort Lauderdale, Florida
 2000-04 Arlene Bujese Gallery, East Hampton, New York
 1996-16 Elena Zang, Woodstock, New York
 1994-16 Cavalier Gallery, Greenwich, Connecticut
 2003 Guild Hall Museum, East Hampton, New York
 1999-09 Shidoni Contemporary Gallery, Tesuque, NM
 1999 Long Beach Museum, Long Beach, New Jersey
 1996 Stamford Museum, Stamford, Connecticut
 1988-91 Shidoni Contemporary Gallery, Tesuque, NM
 1988 Chicago Art Fair, Navy Pier, Chicago, Illinois
 1987 Hudson River Museum, Sculptors Guild, Yonkers, NY
 1984 Molly Barnes Gallery, Los Angeles, California
 1982 Oakland Museum, Oakland, California
 1969-99 Elaine Benson Gallery, Bridgehampton, New York
 1978 PSI Contemporary Art Museum,
 Long Island City, NY
 1978 Nassau County Art Museum, Roslyn Harbor, NY
 1978 The United States Mission, New York, New York
 1977 National Academy of Design, New York, New York
 1976 American Institute of Arts & Letters, NY, NY
 1973-76 Storm King Art Center, Cornwall, New York
 1970 University of Connecticut, Storrs, Connecticut
 1969 New York Sculptors Guild, Bryant Park, NY, NY
 1968 Loeb Student Center, New York University, NY, NY
 1968 Stamford Museum, Stamford, Connecticut
 1964 Contemporary Arts Museum, Houston, Texas

Selected Corporate Collections

2011	Louis Meisel, Watermill, New York
2009	Manhattan House, New York, New York
2005	Stamford, Connecticut (9 Fiddleheads)
2001	Corporate Business Park, Columbia, Maryland
1995	Litwin Building, Wall Street, New York, New York
1995	Goldman Properties, 110 Greene Street, NY, NY
1993	Mayer Collection, Denver, Colorado
1992	Hyatt Regency, Paris, France
1990	Marina Village, Alameda, California
1988	Amli Realty Corporation, Chicago, Illinois
1986	Haverstraw Marina, Haverstraw, New York
1984	Christiania, Tarrytown, New York
1980	Litwin Building, 72nd & 2nd Ave., NY, NY
1977	Cargill, Minneapolis, Minnesota
1967	Gaslight Tower, Atlanta, Georgia
1966	Georgetown Plaza Building, New York, New York
1966	Levitt Headquarters, Lake Success, New York

Selected Major Commissions

1966	"Mushroom Water Garden" Copper 12' x 60' Levitt Headquarters Lake Success, NY
1984	"Crescendo" 24' x 16' x 6' Tarrytown, NY
1986	"Mariner's Gateway" 35' x 34' x 12' Haverstraw, NY
1988	"Spring Mist" stainless steel 30' Itasca, IL
1991	"Menos" stainless steel 25' x 10' 6' Texas A&M university
2001	"Trinity" 26' x 24' stainless steel Corporate Office Properties Columbia, MD
2005	"Flight" bronze 27' x 25' diameter R.J. Kirk Roanoke, VA
2007	"Stella in the Wind" 2007 12' x 15' x 15' Bridgehampton, NY
2008	"Green Thunder" 14' x 8' x 3' Meisel Watermill, NY
2012	"Long Island Sound Portal" painted bronze 12' x 4' x 8' Greenwich CT
2015	"Lady Grace" Stainless Steel 10.5' x 4' x 4' The Grace Building New York, NY

Awards

2003	- Best Sculpture Award, Guild Hall, East Hampton, NY
1996-16	Listing, "Who's Who" in American Art
1996	- Sanctuary Design Competition, Omega Holistic Health Institute, Rhinebeck, NY
1976	- Exhibition, American Institute Arts & Letters, NY, NY
1976	- Nebraska Bicentennial Sculpture Competition, Sydney, Nebraska
1964	- Emily Lowe Sculpture Award, New York, New York

Museum Collections

Miniature Museum Amsterdam, Holland
Guild Hall East Hampton, NY
Grounds for Sculpture, Hamilton, New Jersey
Danubiana Meulensteen Museum, Bratislava, Slovakia
Miami University Art Museum, Oxford, Ohio
Boca Raton Museum of Art, Boca Raton, Florida
Estate of Nelson Rockefeller, Kykuit, New York
Lowe Art Museum, Coral Gables, Florida
Butler Institute of American Art, Youngstown, Ohio

Municipal Collections

2011	Jing'an Park, Shanghai, China
2001	City of Toledo, Ohio
1999	Mt. Sinai Hospital, Miami, Florida
1992	Myriad Gardens, Oklahoma City, Oklahoma
1988	City of Ormond Beach, Florida
1988	City Hall, Voorhees, New Jersey
1983	State Capitol Plaza, Lansing, Michigan
1976	I-80 Nebraska Bicentennial, Sidney, Nebraska
1972	Jewish Institute for Geriatrics Care, Lake Success, New York

University Collections

Pratt Institute Brooklyn, New York
City University of New York,
Staten Island Community College, New York, New York
Stony Brook University, Stony Brook, New York
Texas A&M University, College Station, Texas
Towson University Art Center, Towson, Maryland
University of Missouri, Columbia, Missouri
Wheeling Jesuit University, Wheeling, West Virginia

www.HVDBGates.com

One of a kind, totally unique, museum quality,
estate entry gates constructed of stainless steel or bronze.

Designed by internationally renowned, contemporary
abstract sculptor and architectural designer,
Hans Van de Bovenkamp
in collaboration with

East Hampton Fence & Gate Company
Michael Marran
8 Hardscrabble Ct.
East Hampton, NY 11937
631 324 5941
www.easthamptonfence.com

You are invited to experience these extraordinary,
state-of-the art masterpieces
exclusively displayed at
93 Merchants Path (just off Sagg Road)
in Sagaponack, NY

Simply drive by or schedule an appointment.
631-537-6640

WWW.HVDBGates.com