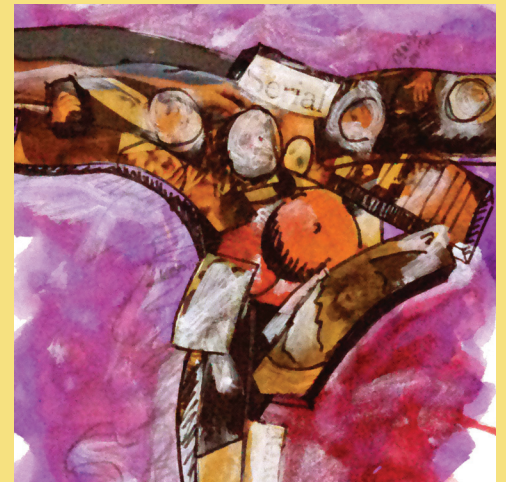
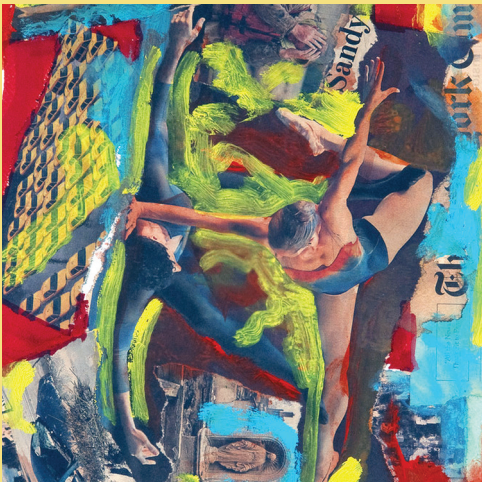


Hans van de Bovenkamp
Drawings & Collages



Hans van de Bovenkamp

Drawings & Collages

Recreating Sacred Space The Work of Hans Van de Bovenkamp

Since time immemorial, human beings have created “sacred space.” According to religious historian Mircea Eliade, the urge springs from the primordial depths of the psyche. Such places are necessarily set apart from daily life and the bustle of the marketplace.

Setting aside hallowed ground can be done in a variety of ways: by drawing a circle in the sand or etching it on a cathedral floor; by hanging cords and paper streamers around it or creating a gate through which you must pass in order to reach it, and by creating a “holy of holies” deep within a temple, into which only certain high priests or priestesses may go. With these “bounding” rituals, a different frame of reference or “reverence” is established, the normal doings of the world is set aside, and you can foster a sense of the divine.

As a mythologist, I recognized this same primordial impulse, the human urge to create sacred space, in the work of my friend and neighbor, Hans Van de Bovenkamp. At first, my wife, Robin, and I noticed and admired the elegant and precise way Hans created functional workshops and studios in dusty old barns and abandoned chicken coops. In the beginning, Hans did much of the labor himself. We would come to visit and find him crouched over a welder or a cement mixer, up on a ladder, or like a mad inventor, driving a rickety old crane around his towering, steel question marks. In fact, it seemed that each time Robin and I visited, we were treated to an elegant new environment, in which to lounge and taste the wonderful things of life; good food and drink—and lots of mind play—as we enticed each other into new creative visions amid paroxysms of laughter.

Because environments did transform around Hans: ramshackle buildings and weedy fields achieved a new dignity, problematic wetlands became a parkland of serpentine grass labyrinths, undulating burms, and reflecting ponds. And everywhere, in and around the studios and pavilions, his often whimsical sculptures clustered like frozen archetypes and space-age steel Moai.

Sometimes I have experienced a kind of creative vertigo around my friend's relentless self-actualization. His soul seems to be spilling over with images and ideas. I would bring him a copy of the latest book I had written, and he would show me steel creations that, with the help of derricks, would be erected in public plazas in Europe and America.

In sacred space, you must leave emptiness, for that is where the spirit can enter, like breath into the spaces between the consonants of Hebrew sacred scripture. Wisely, Hans leaves places among his sculptures to contemplate, to play, to dream.

Campbell says that traditionally sacred space functions to set aside “the normal attitude toward the cares of the world.” But Hans Van de Bovenkamp—perhaps subversively—inserts his shrine-like landmarks or “energy spots” even into the marketplace itself. For instance, his intent in placing a twenty-foot sculpture beside a thirty-story building is to humanize the architecture, minimizing its scale, and make the setting more intimate. Viewers take in a little *sunyata*, emptiness, with each glance at the gleaming sky-reflecting steel enigma. His sculpture-ciphers sometimes resemble the curious question marks on Buddhist stupas, such as the colossus at Bodhinath, Nepal.



Once Hans came to me to share a new idea. He wanted to create gigantic tables in the middle of nowhere, the top perhaps to be reached by a ladder, as if to a giant's dwelling, surrounded by celestial cloud shapes. The project coincided, by one of these Jungian synchronicities, with my own study of the use of mesas, symbolic tables in South American shamanism. In this tradition, the magician sets up a small table-like sanctuary, upon which he places all of his "power objects," talismans of personal power. These mesas are symbolic replicas of the cosmos; the whole world is represented on its surface.

Versions of the sacred table occur in North America, in the sand paintings of the Navajo, and we have witnessed Buddhist priests painting a mandala in sand in the high Himalayas, near Tibet. Standing there in sacred space we realized that we were symbolically connected to everything. Confronted with Van de Bovenkamp's magical forms, the cosmos is present right here—in New York, Kansas City, Miami, or Zurich, even in the secular city with its complex architecture.

Usually Hans is clear about what he is doing, as in the extraordinary meditation temple he designed for Omega Institute. Within this compelling combination of contemplative architecture and interior design, the mind is quieted, the senses soothed—we hear a bell ringing in an empty sky.

A similar sense of purpose visited Hans eight years ago in Bali, where he had three traditional teak and ironwood temples built in order to disassemble them and have them shipped to the US, so he could reassemble the two thousand four hundred

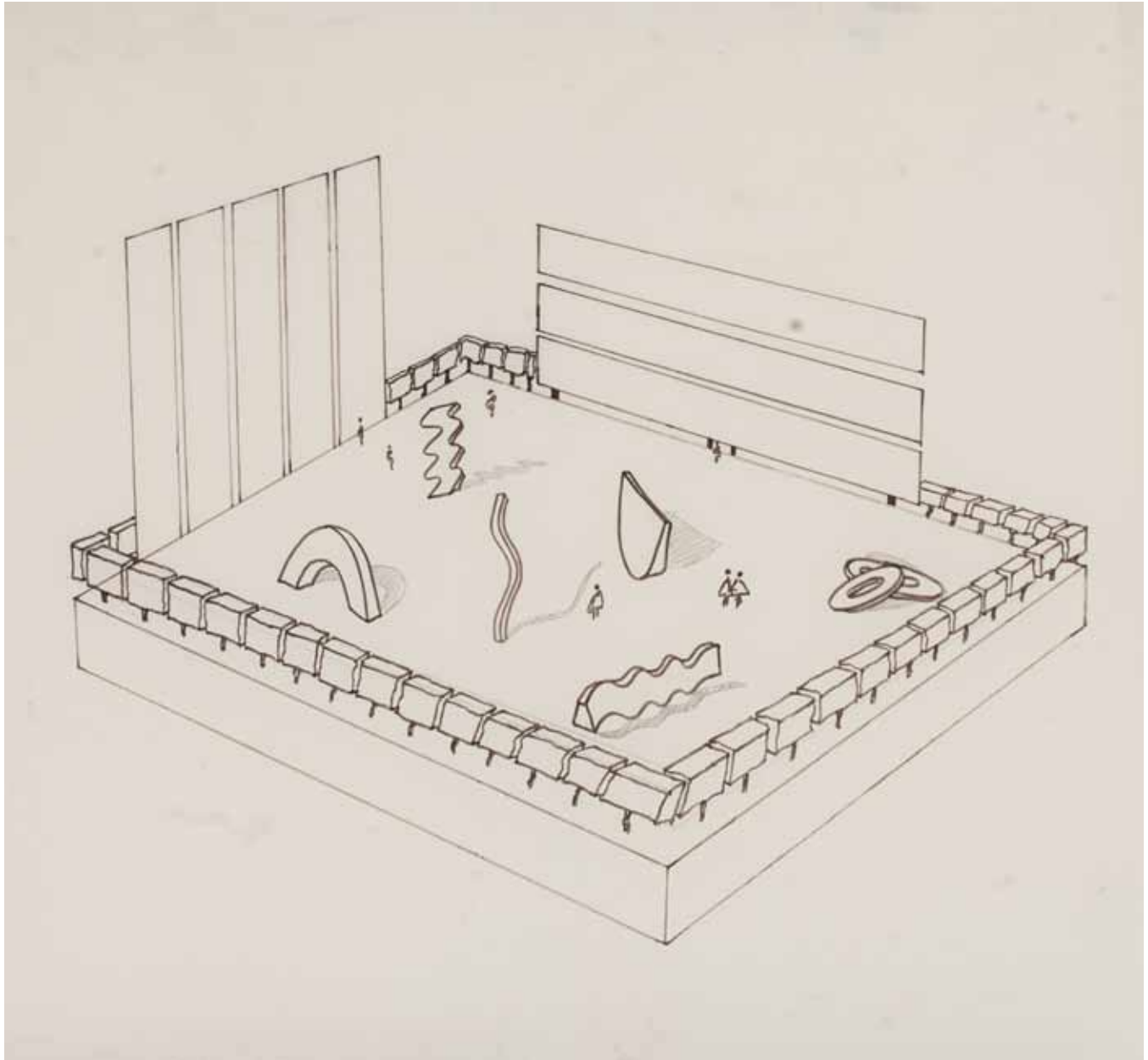
pieces by a lake he made on his property. This temple-dwelling has become a tour-de-force of traditional and innovative architectural methods, its buildings nesting like silent witnesses to the surrounding marvels, his own creations, contemporary art, and Buddhist and Hindu objects and deities.

I picture Hans rising like Hephaestus, the Greek divine craftsman, in the early morning sunlight, and beginning to wrest shapes, great or small, out of steel, bronze, and copper. By evening, the hammers, forges and welders are silent. The master sits in his quiet, graceful temple and visits with clients or friends. This man has not only learned how to live well, but how to share well.

As our old friend Joe Campbell said, "Follow your bliss!" and doors will open for you, that you didn't even know were there." It was Campbell at his most artless, simply describing how his own life had worked. Hans Van de Bovenkamp has trod a similar path, underscoring the same principle.

As a young psychologist, I diagnosed Hans with "positive paranoia," the outrageous belief that the universe is conspiring in your favor. Like the core of his being, the truth and clarity of his accomplishment is validated by the blessing of the universe. Hans pitched his table-top up toward the clouds and found a beautiful feast perpetually spread upon it.

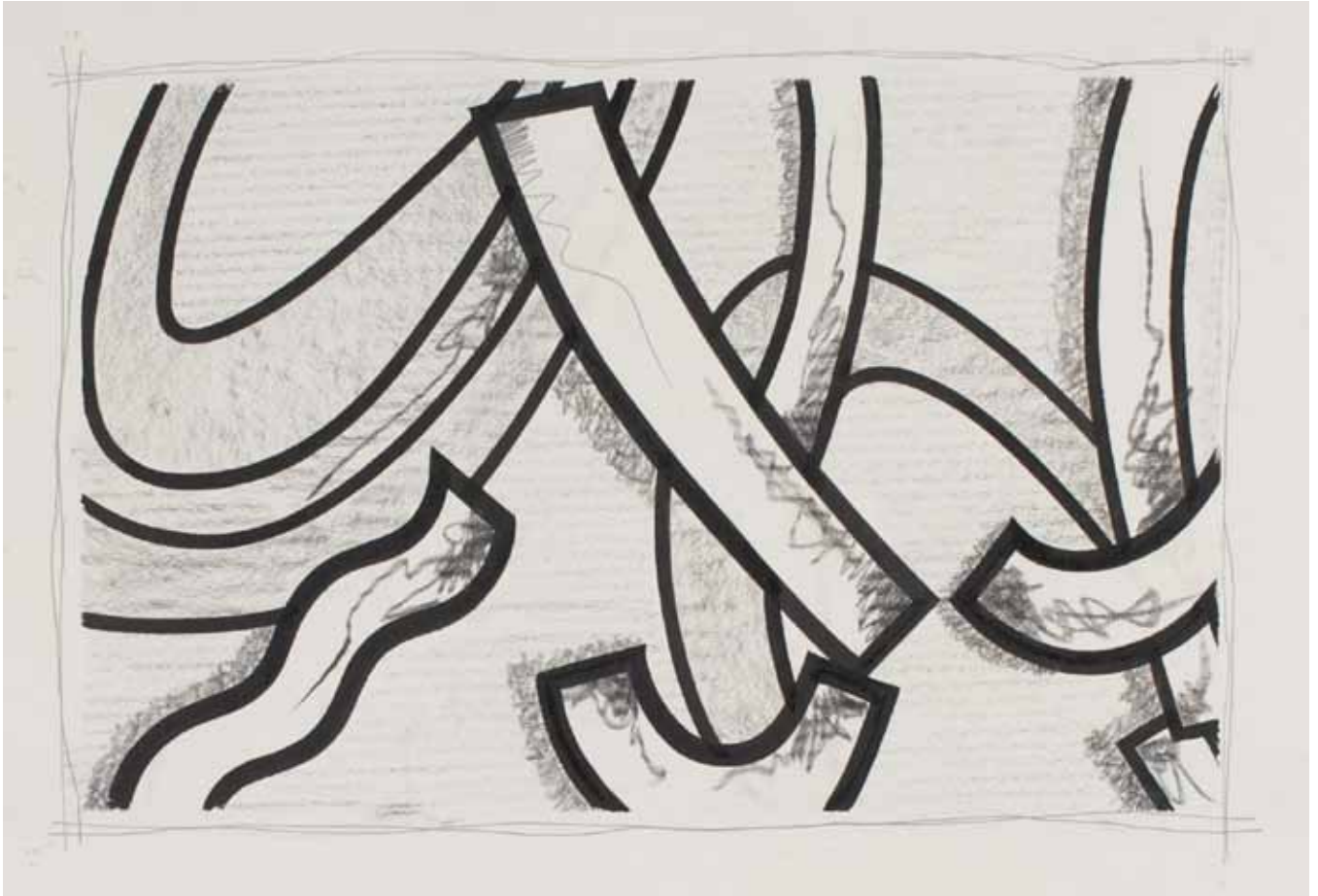
Steven Larsen, Ph.D. is Professor Emeritus SUNY, the author of The Mythic Imagination, and with his wife Robin, A Fire in the Mind, the Life of Joseph Campbell, and The Fashioning of Angels; Partnership as Spiritual Practice. The Larsens co-direct The Center for Symbolic Studies near New Paltz.



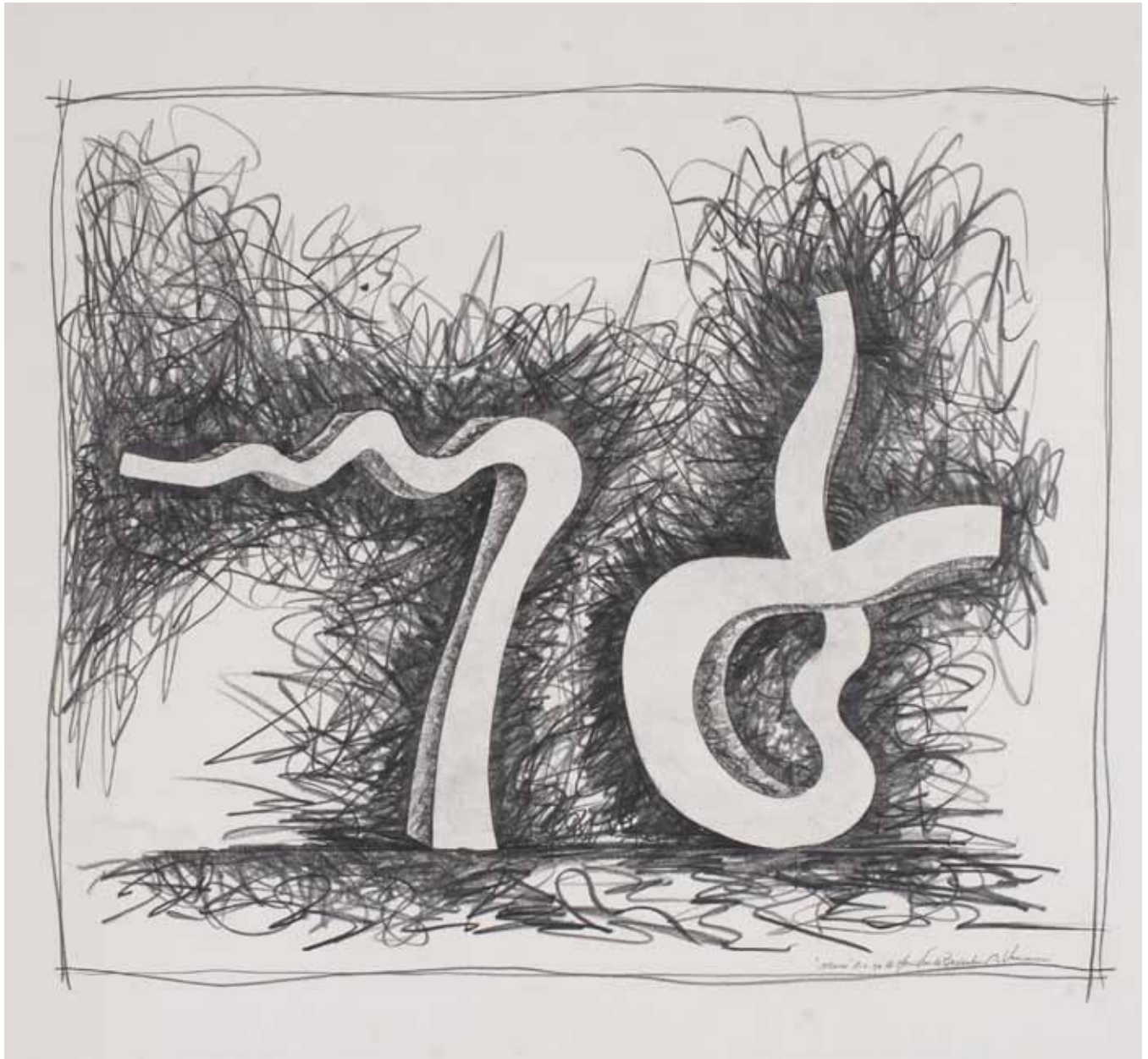
"Proposal for Vest Pocket Sculpture Plaza" 1972 25" x 31"



"Black Palette Table" 1979 28" x20"

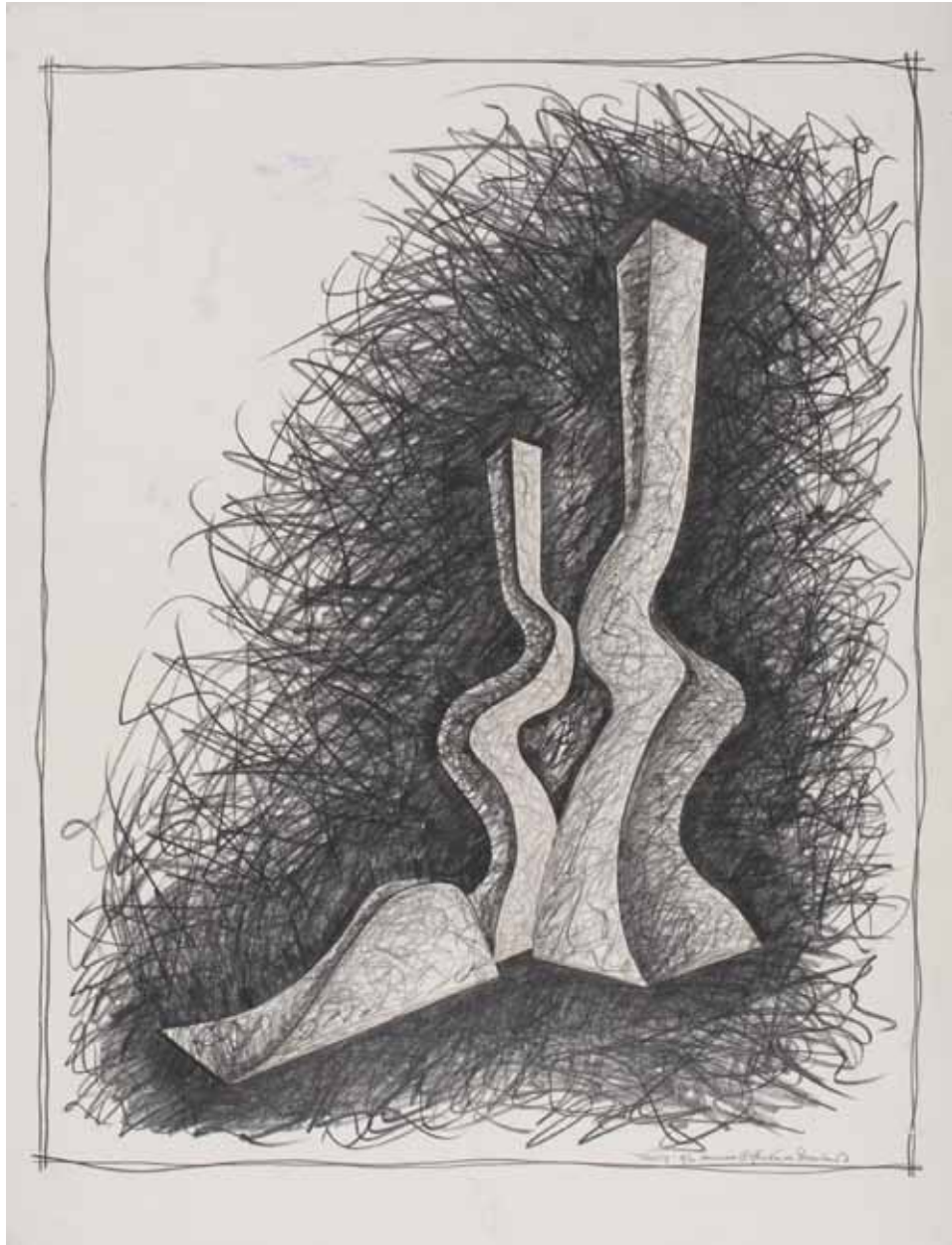


"Detail of Circles and Waves with Painted Edges" 1982 16" x 24"



Sketch for Stella in the Wind and Crescendo 1990 27" x32"

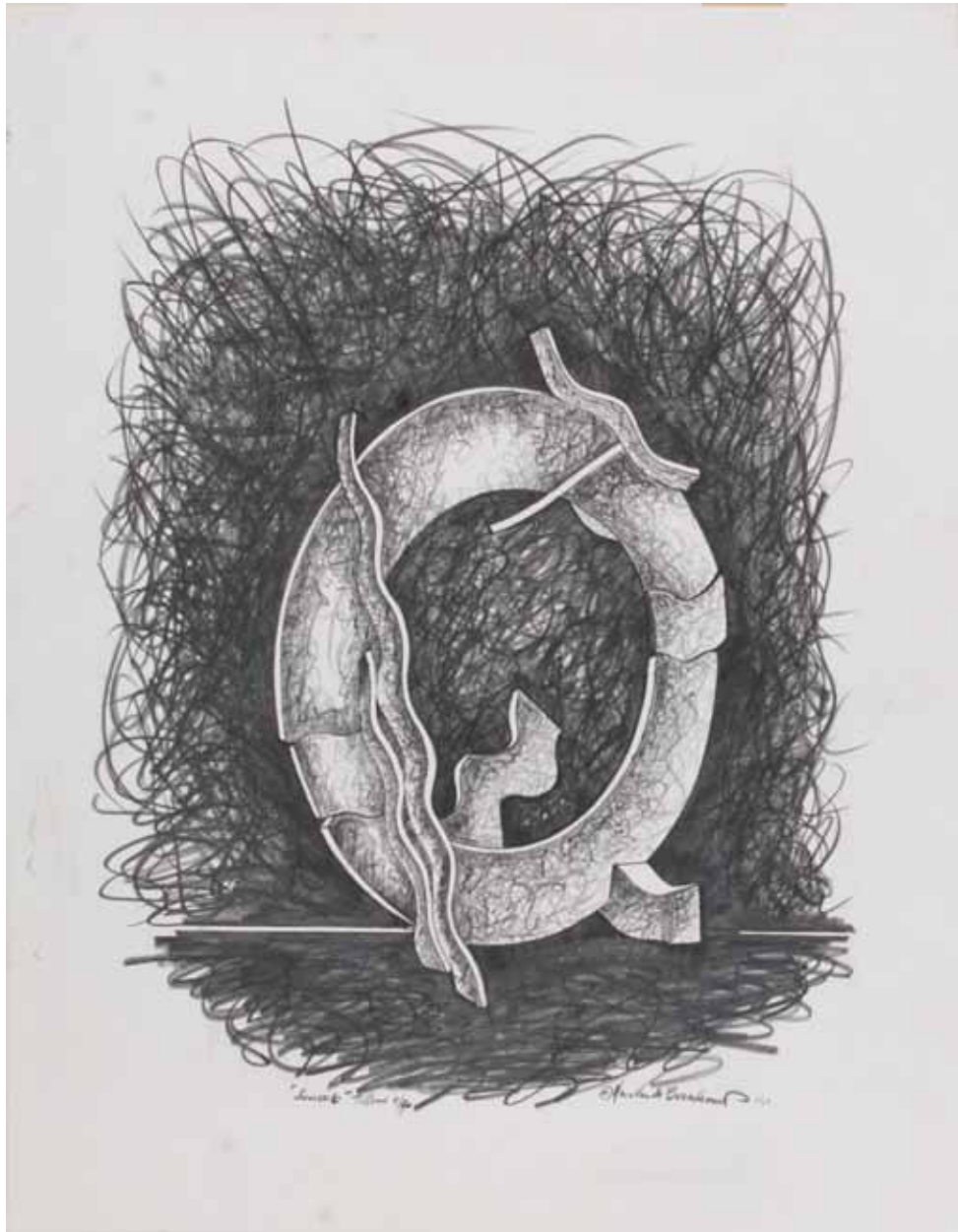




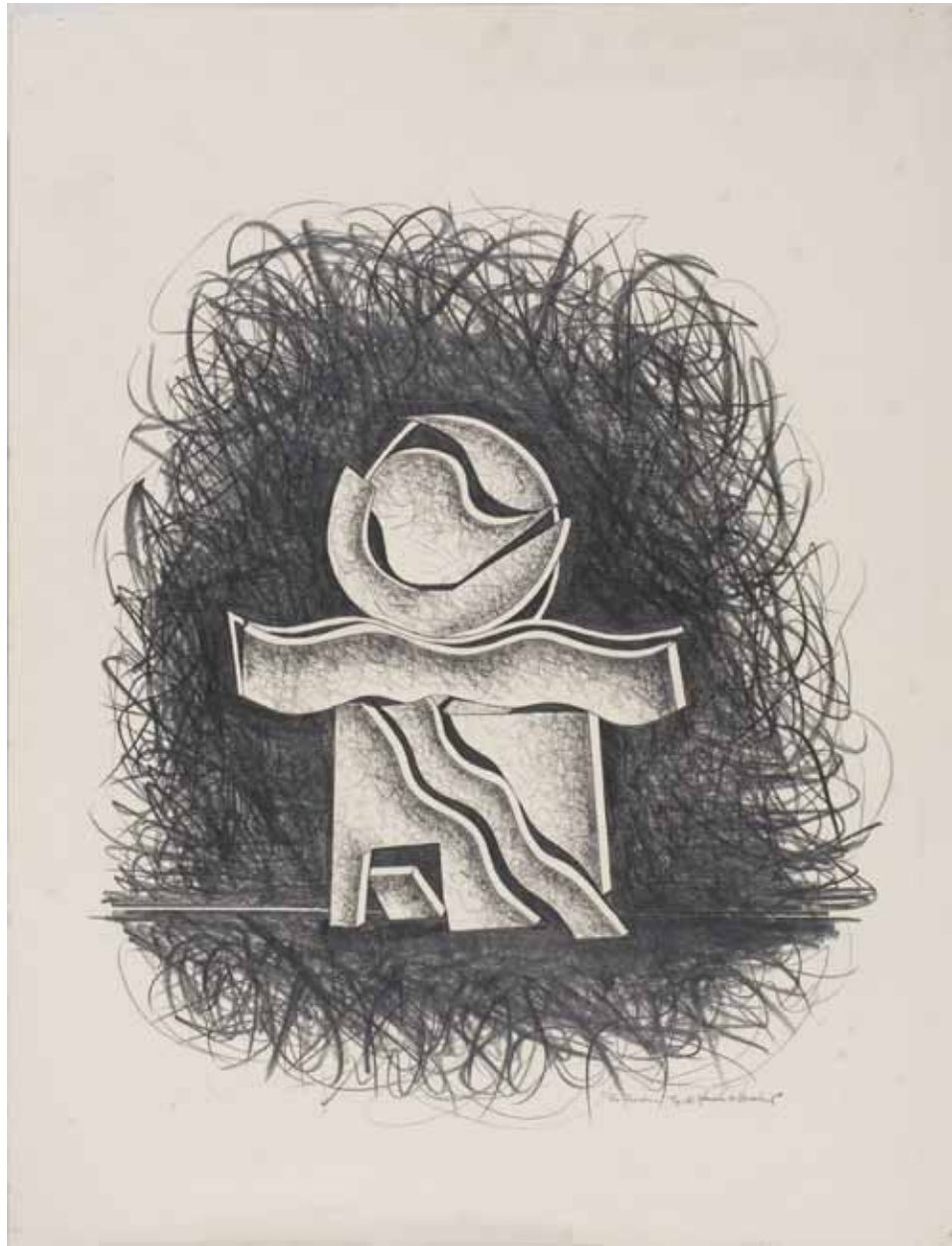
Sketch for Trinity 1990 37" x29"



Rocking Pendulum 1990 26" x 17"



Sunset 1990 26" x20"



The Guardian 1990 33" x 28"



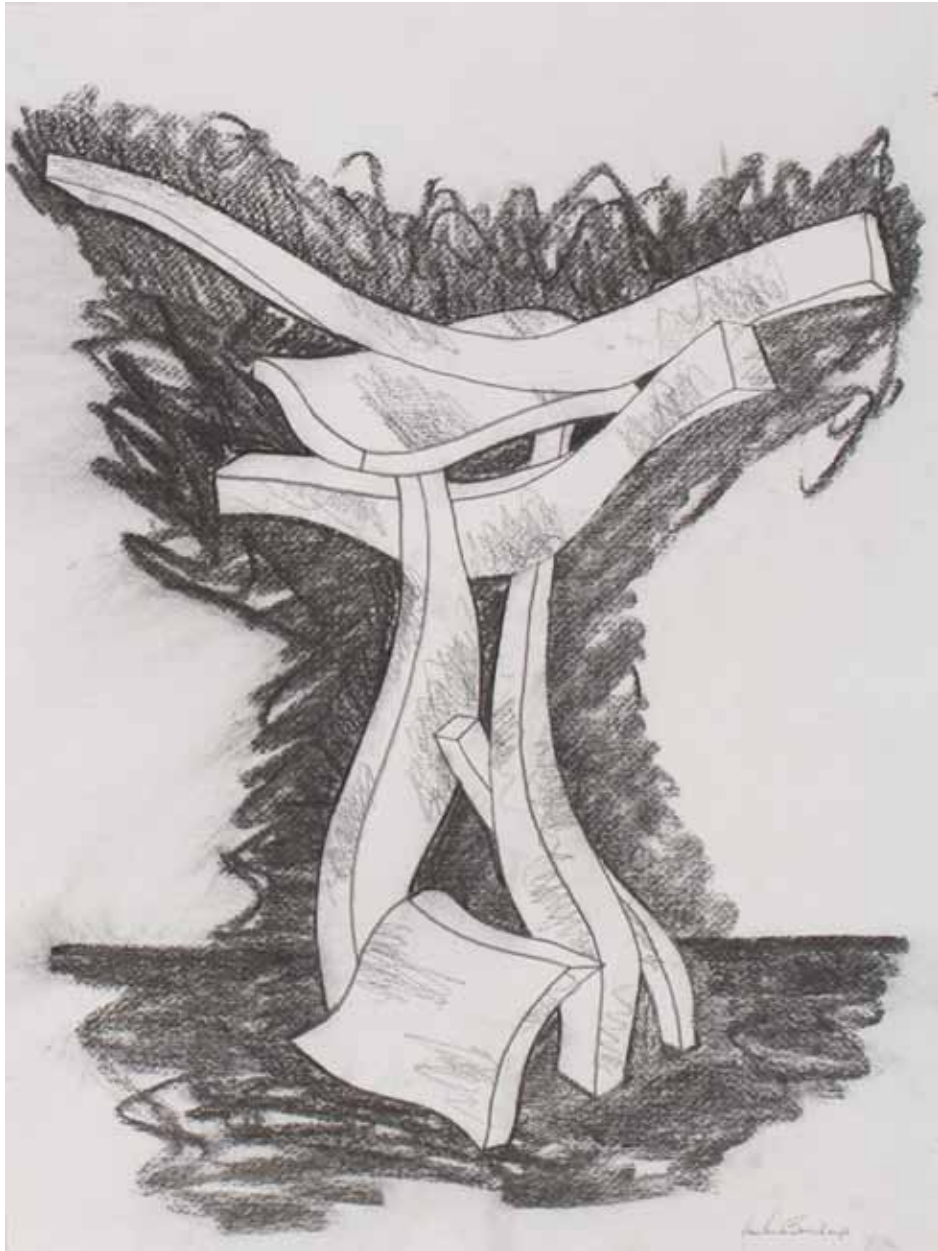
Menos 1999 26" x 19"



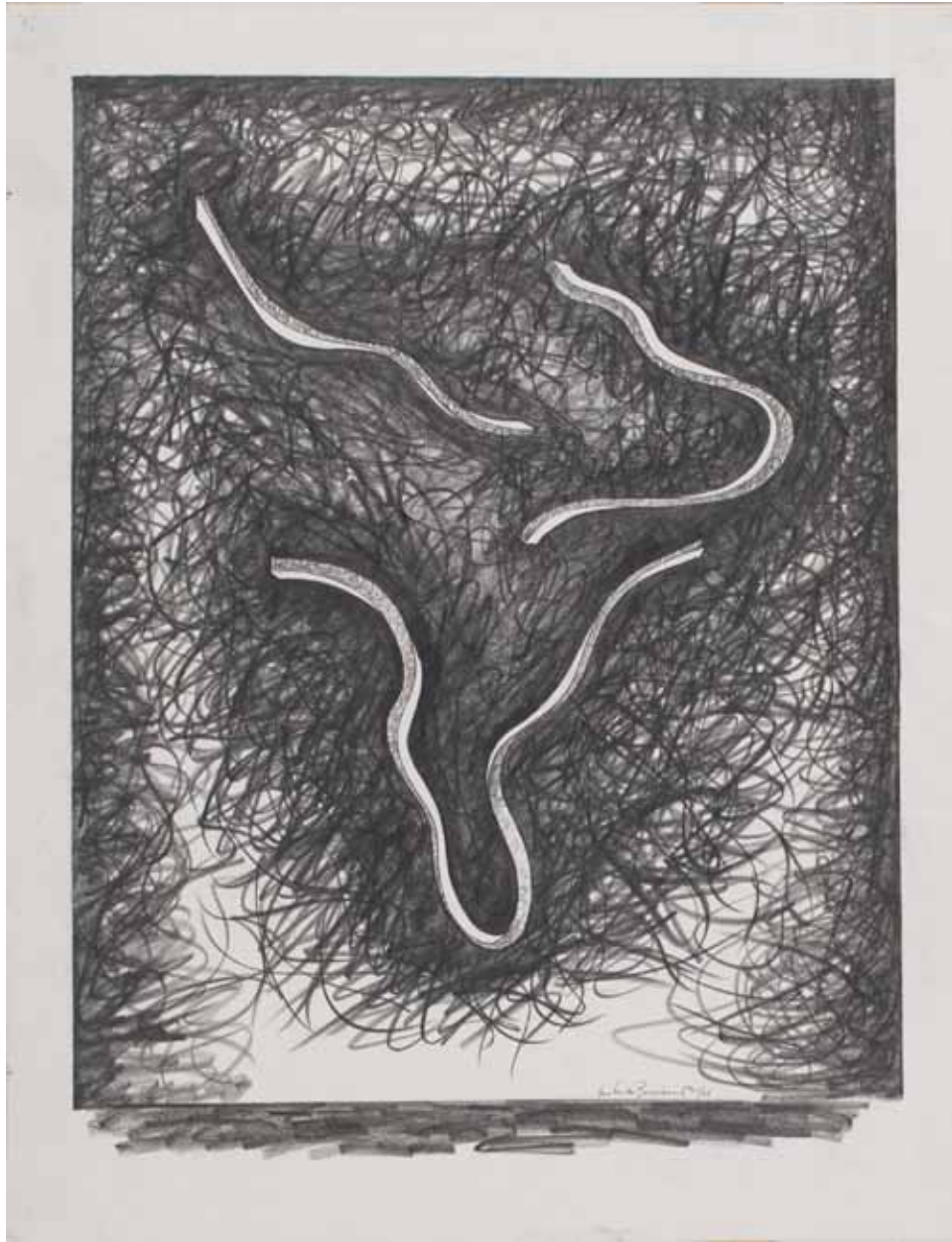
Detail Palette 2004 30" x 40"



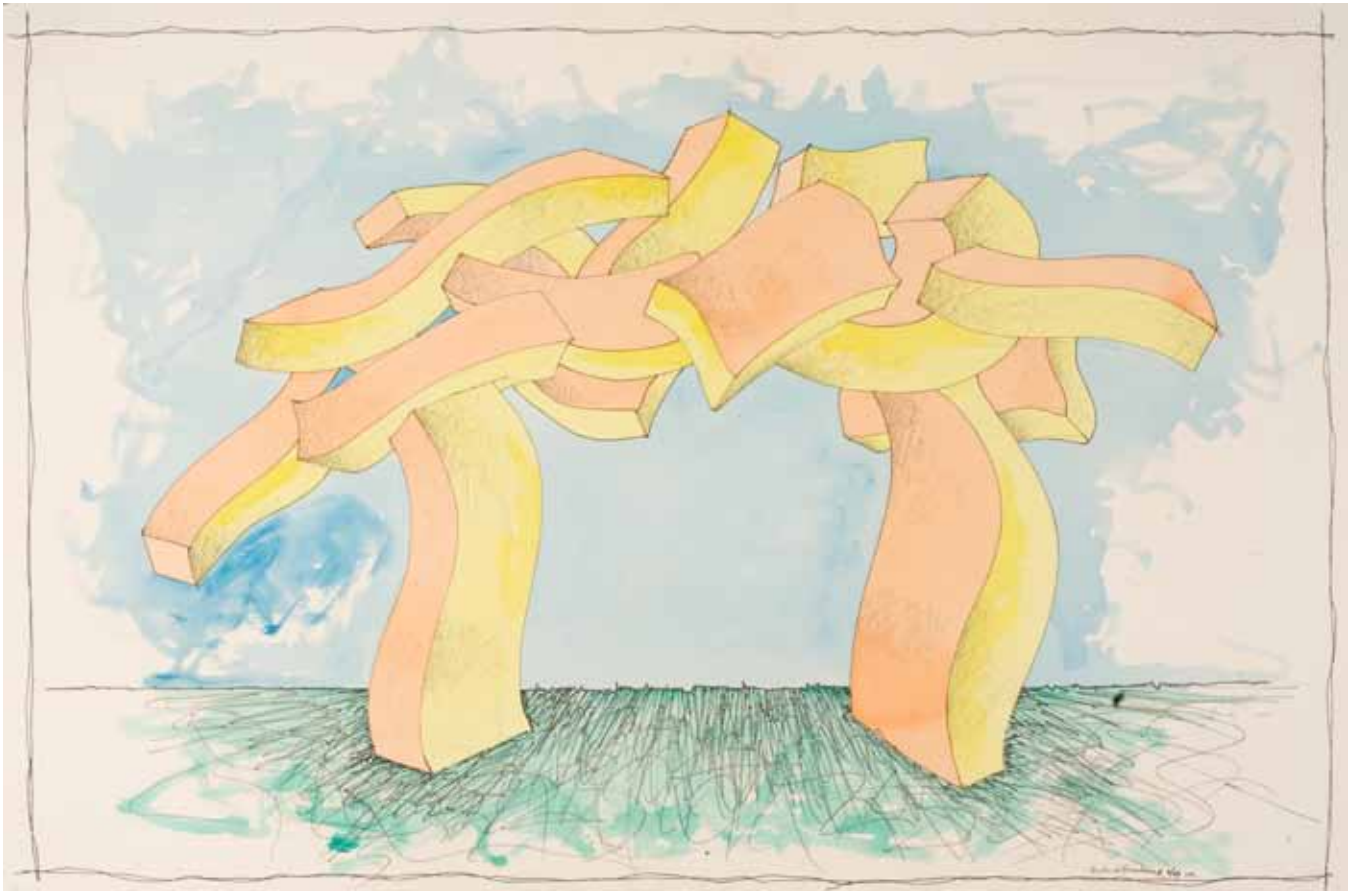
Menhir Study Sieve 2005 18" x 24"



Quentessence 2005 23" x 17"



Suspended Wiggles 2005 27" x 21"





Pink Amour 2007 14" x 11"



Green Flower #2 2007 40" x 30"



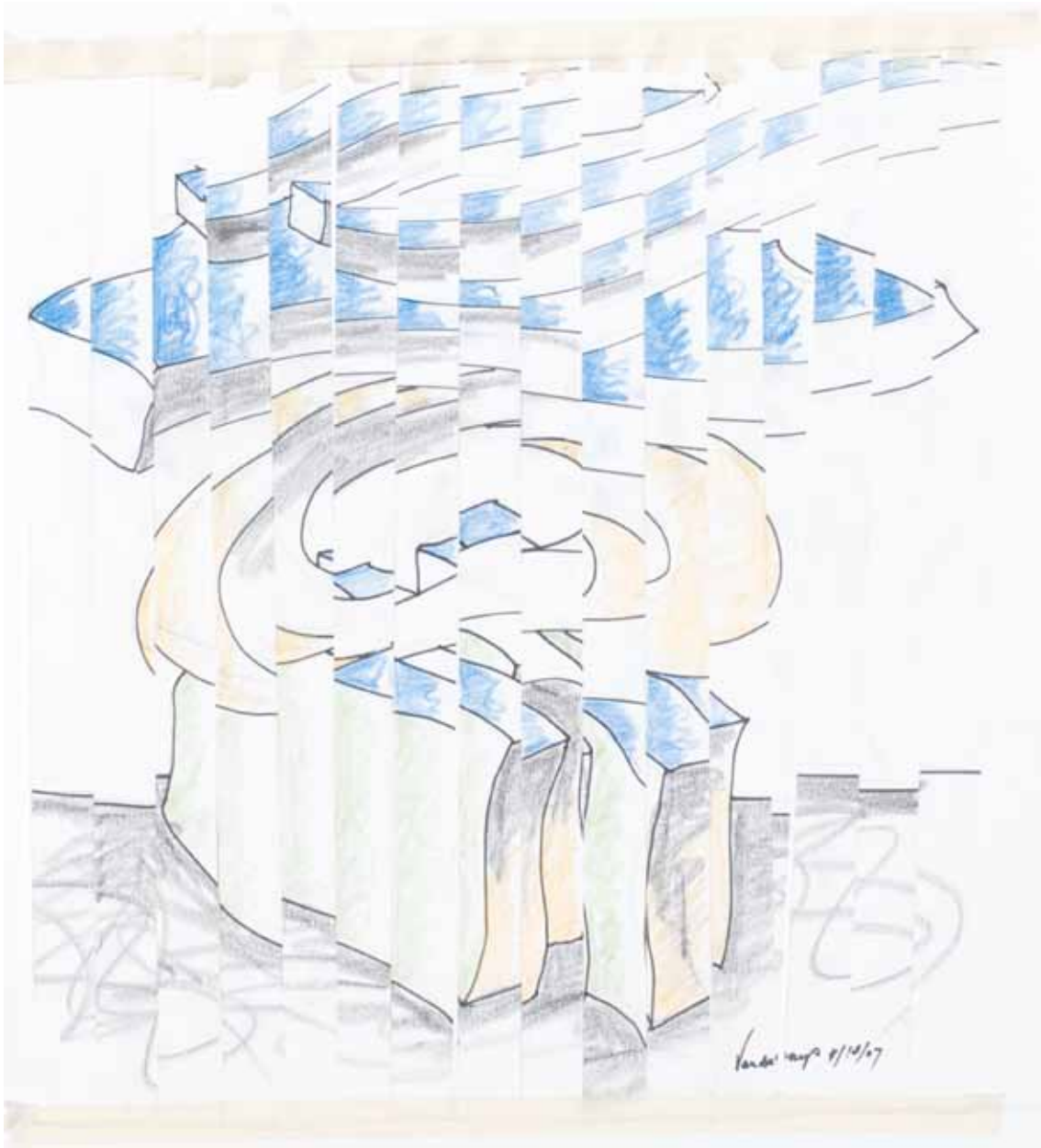
Red Flower #2 2007 40" x 30"



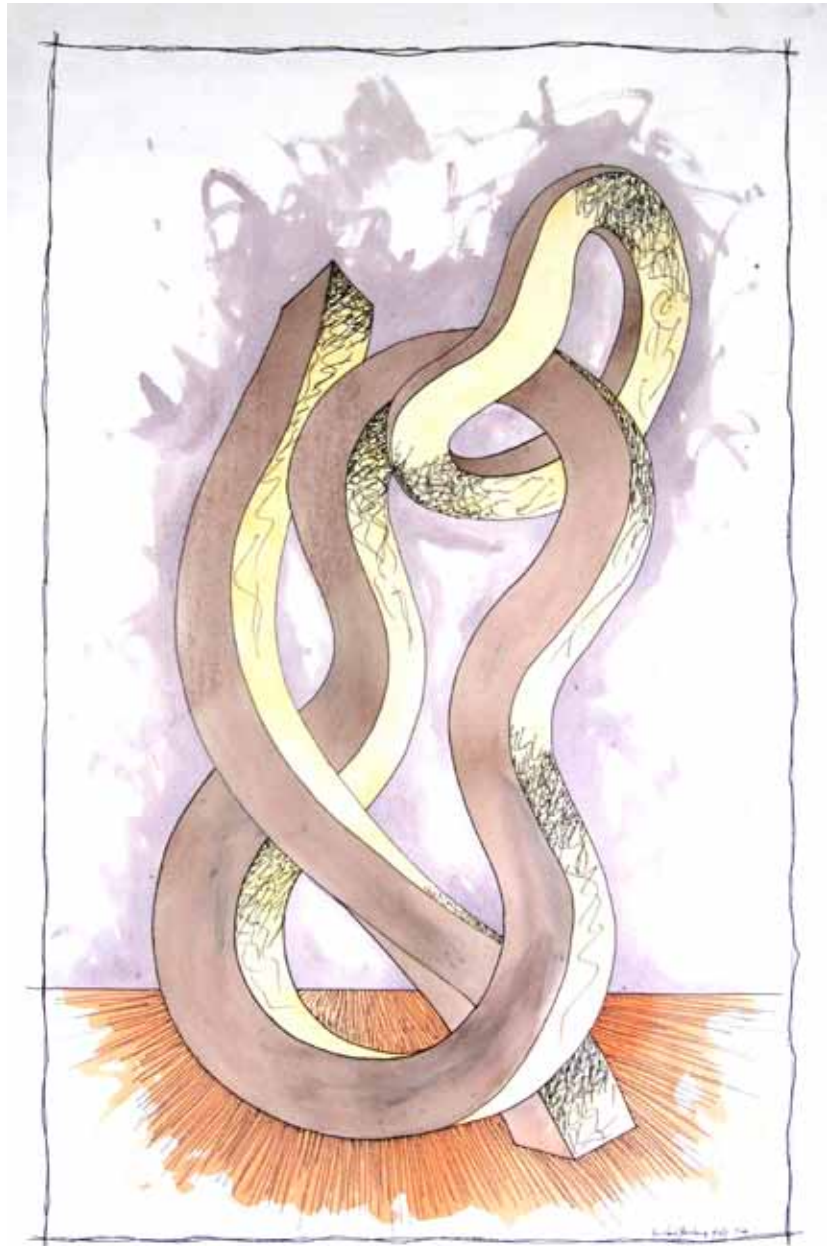
Pharaoh's Tomb 2007 30" x 28"



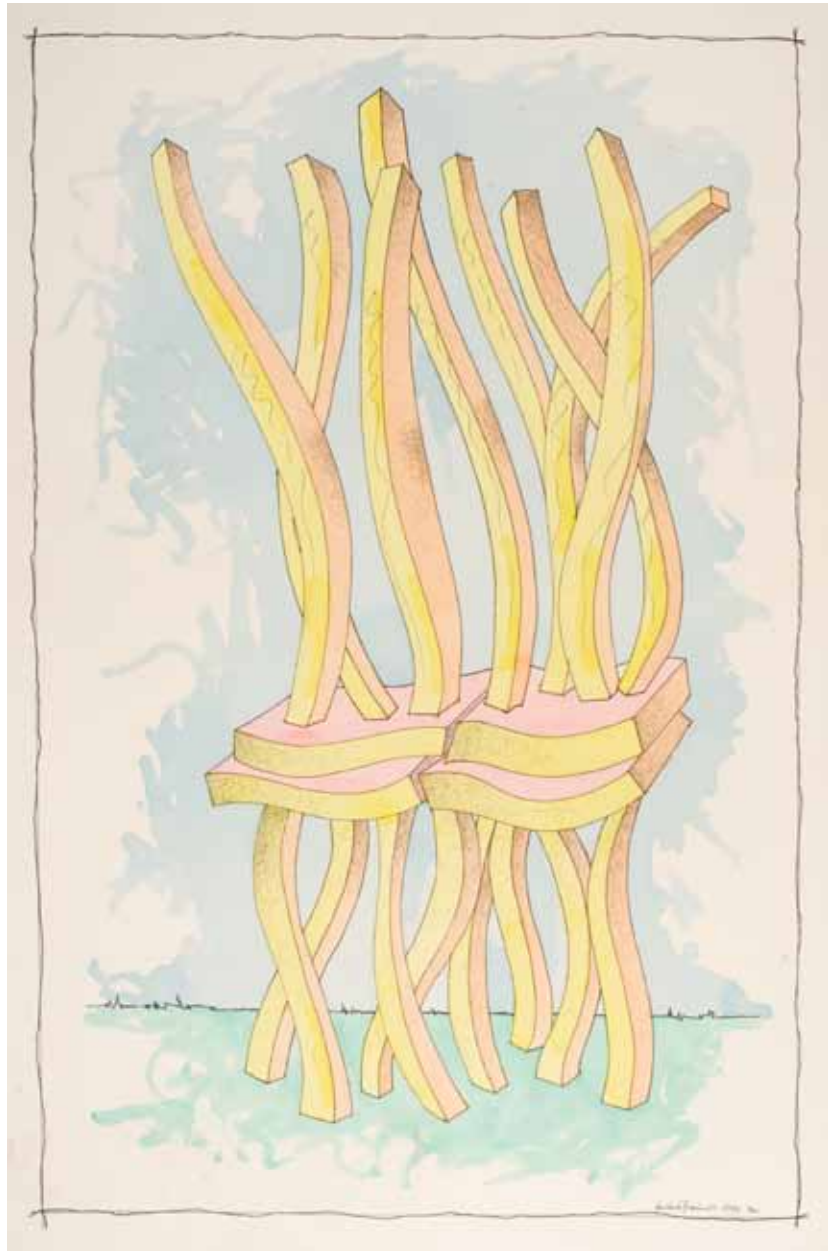
Spire 2007 44" x 30"



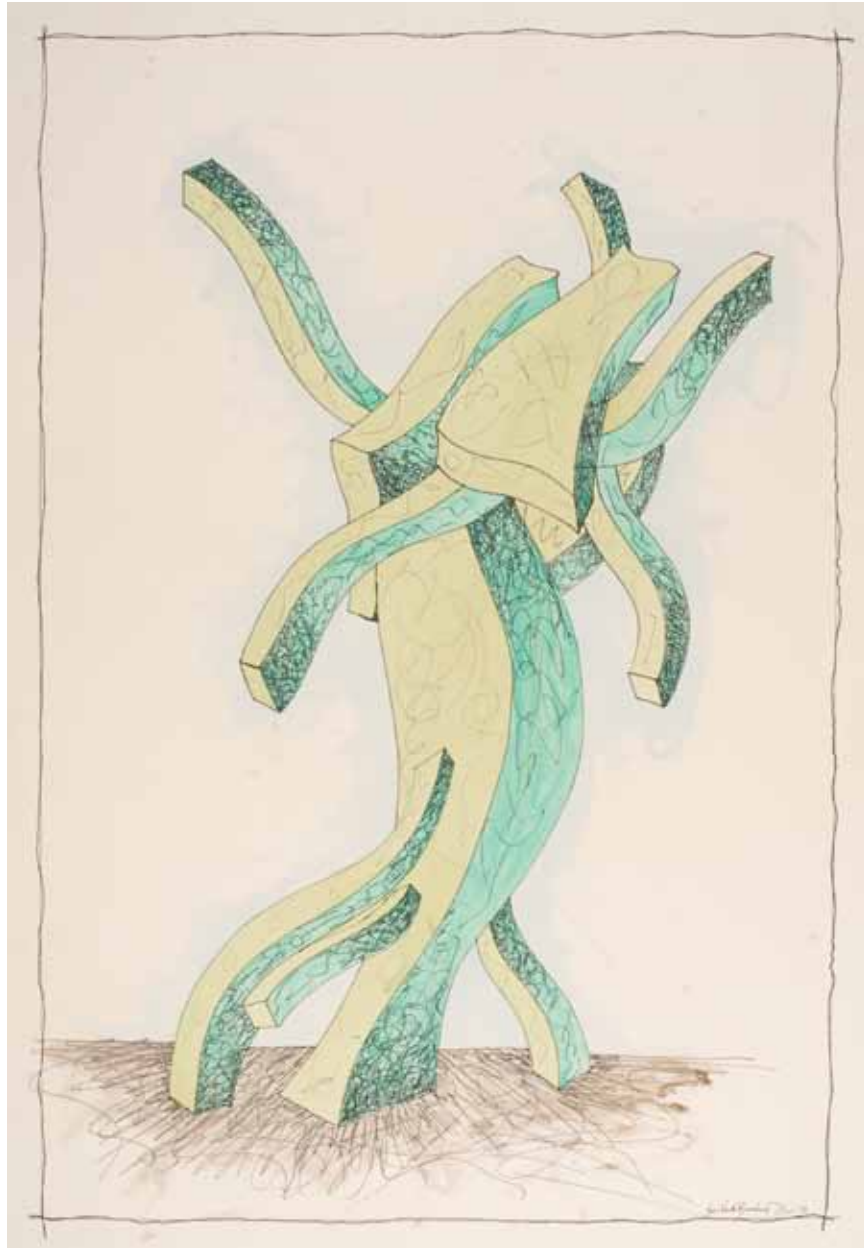
"In Focus" 2007 20" x 21"



"Ode to Mingus" 2007 60" x 40"



Ode to Chamberlain 2007 60" x 40"



One Step Menhir 2007 60" x 40"

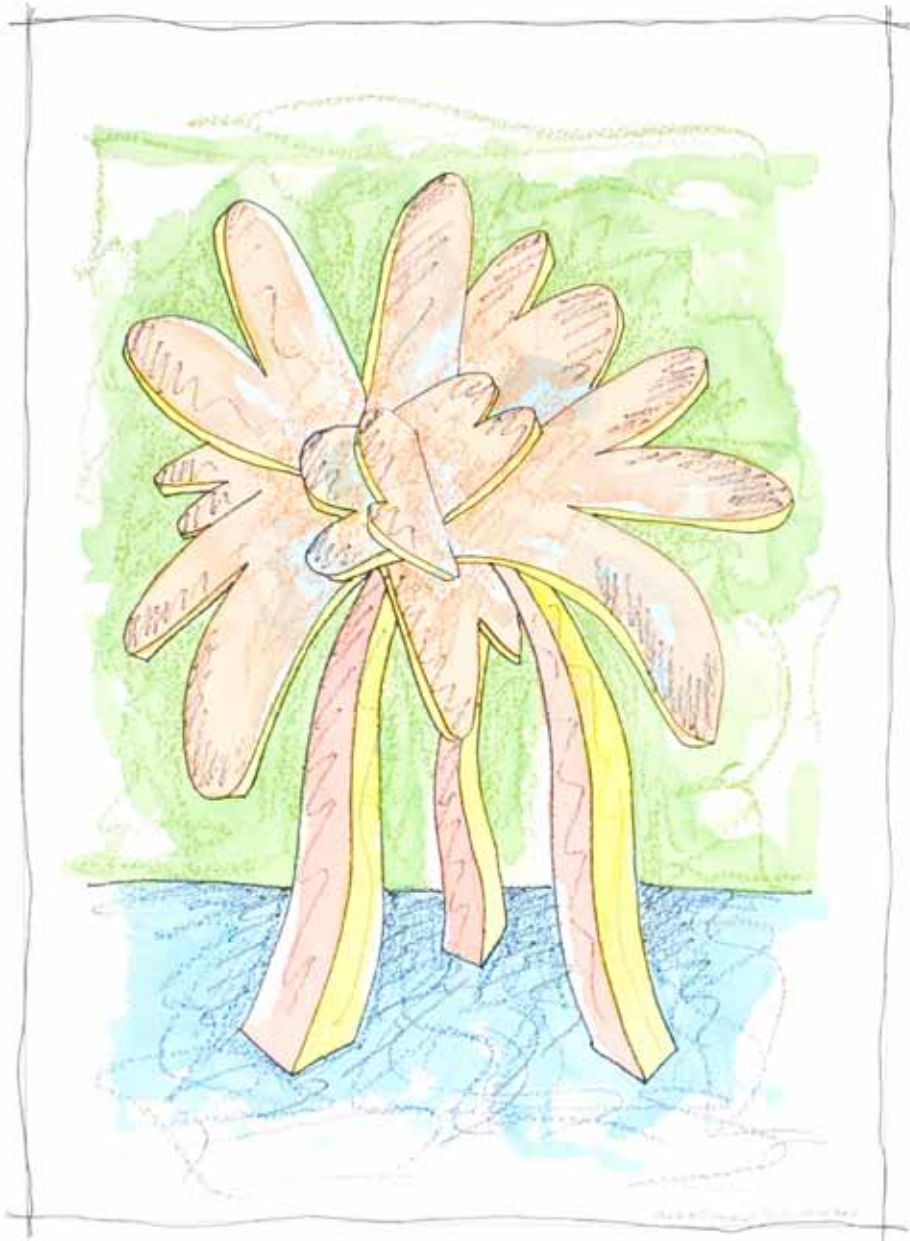


Ode to Miles 2007 60" x 40"

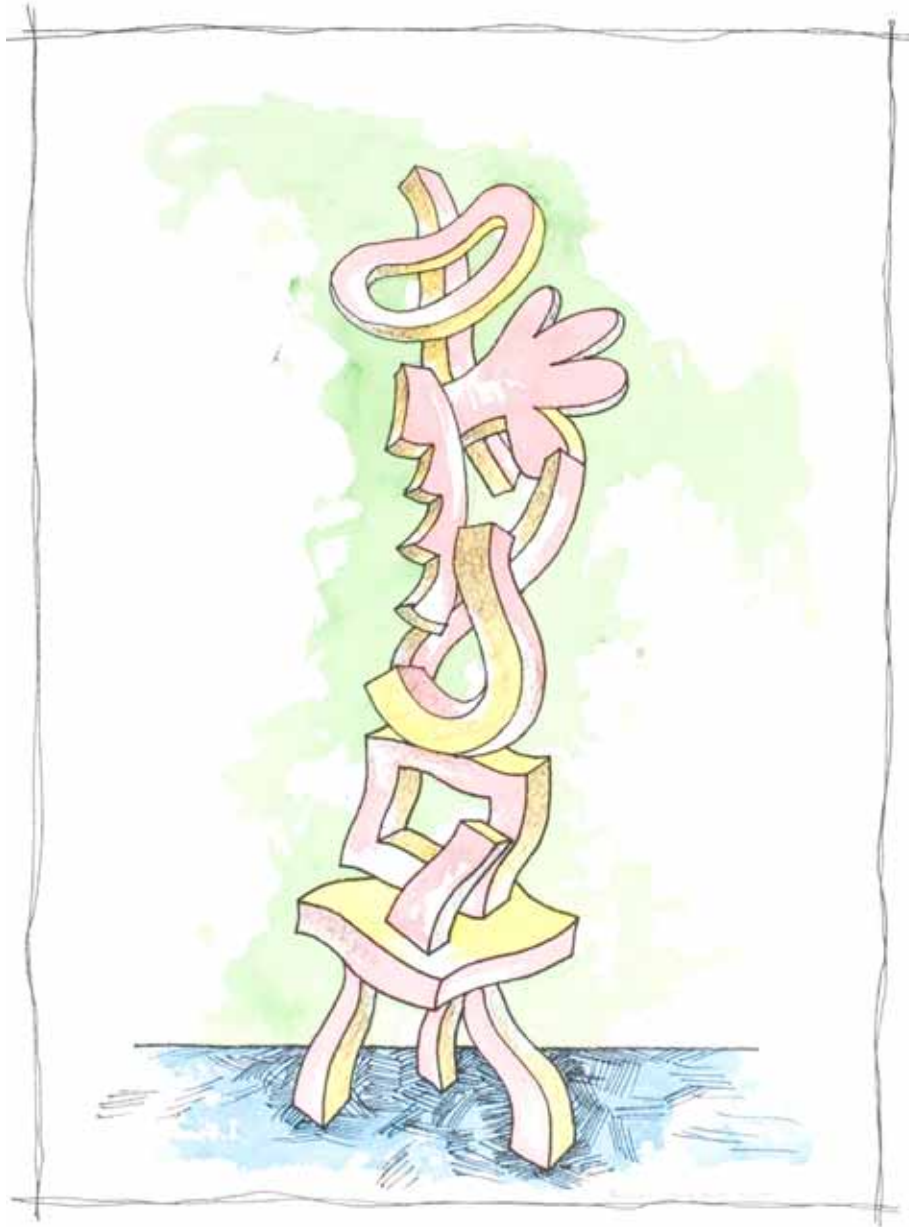


Gaea#2 2007 60" x 40"

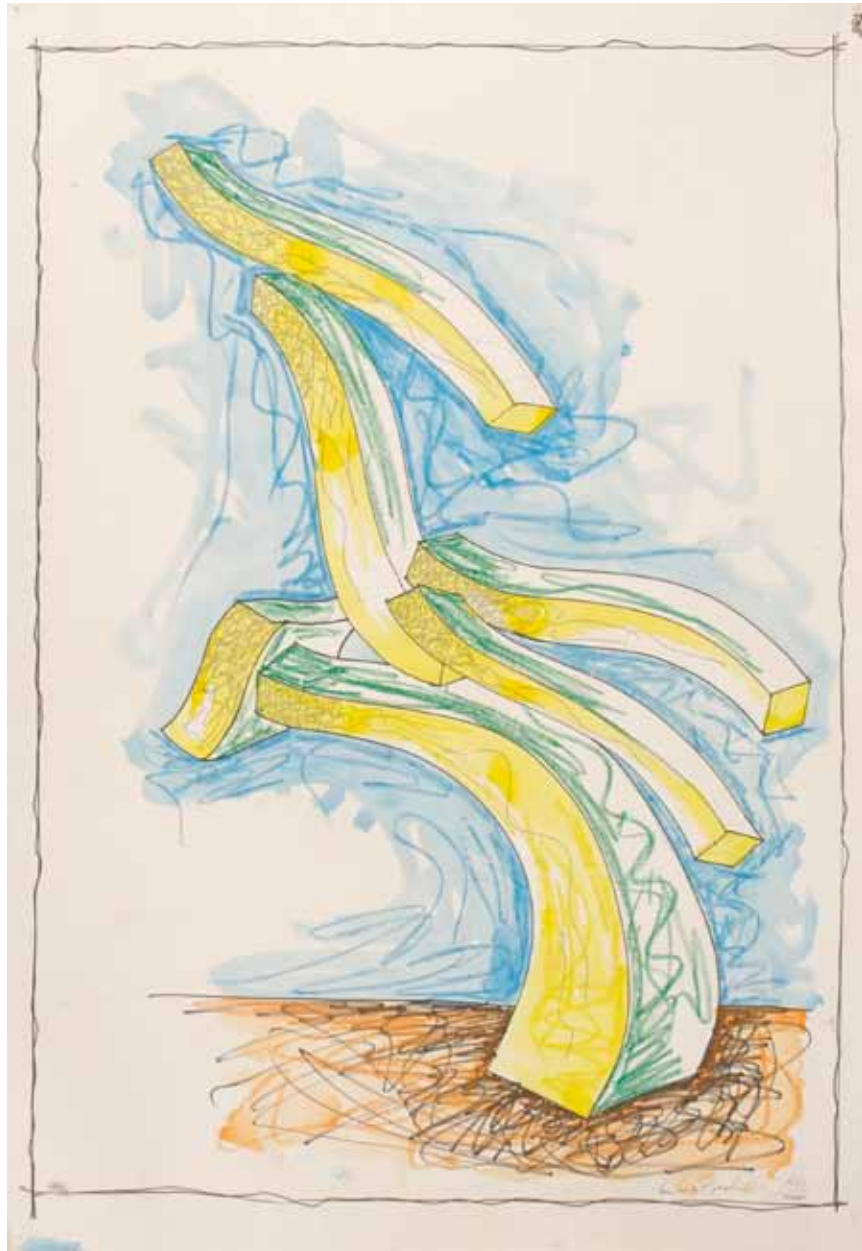




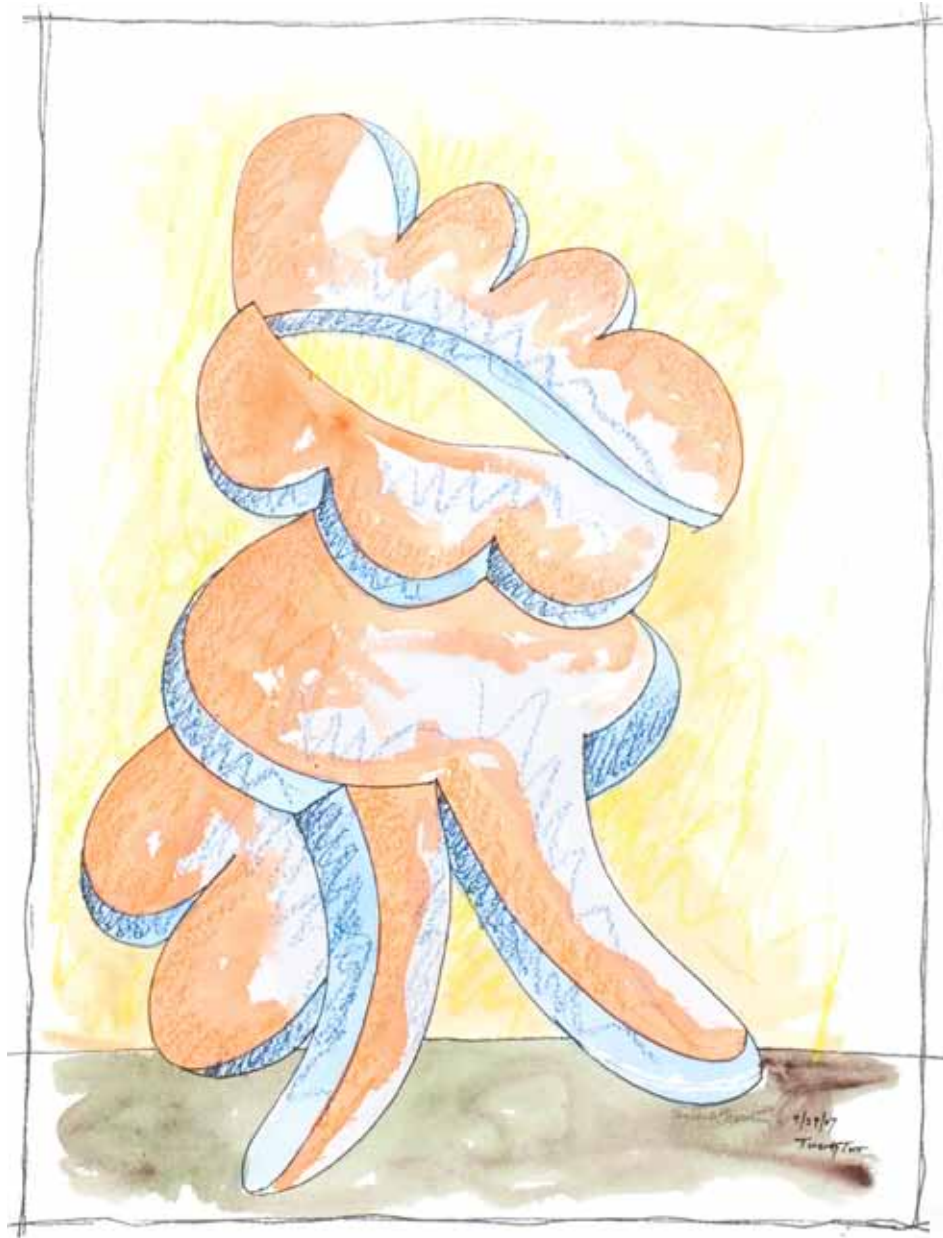
Pink Flower #2 2007 40" x 30"



Michael's Glove 2007 30" x 23"



Study for Flight 2008 40" x 30"

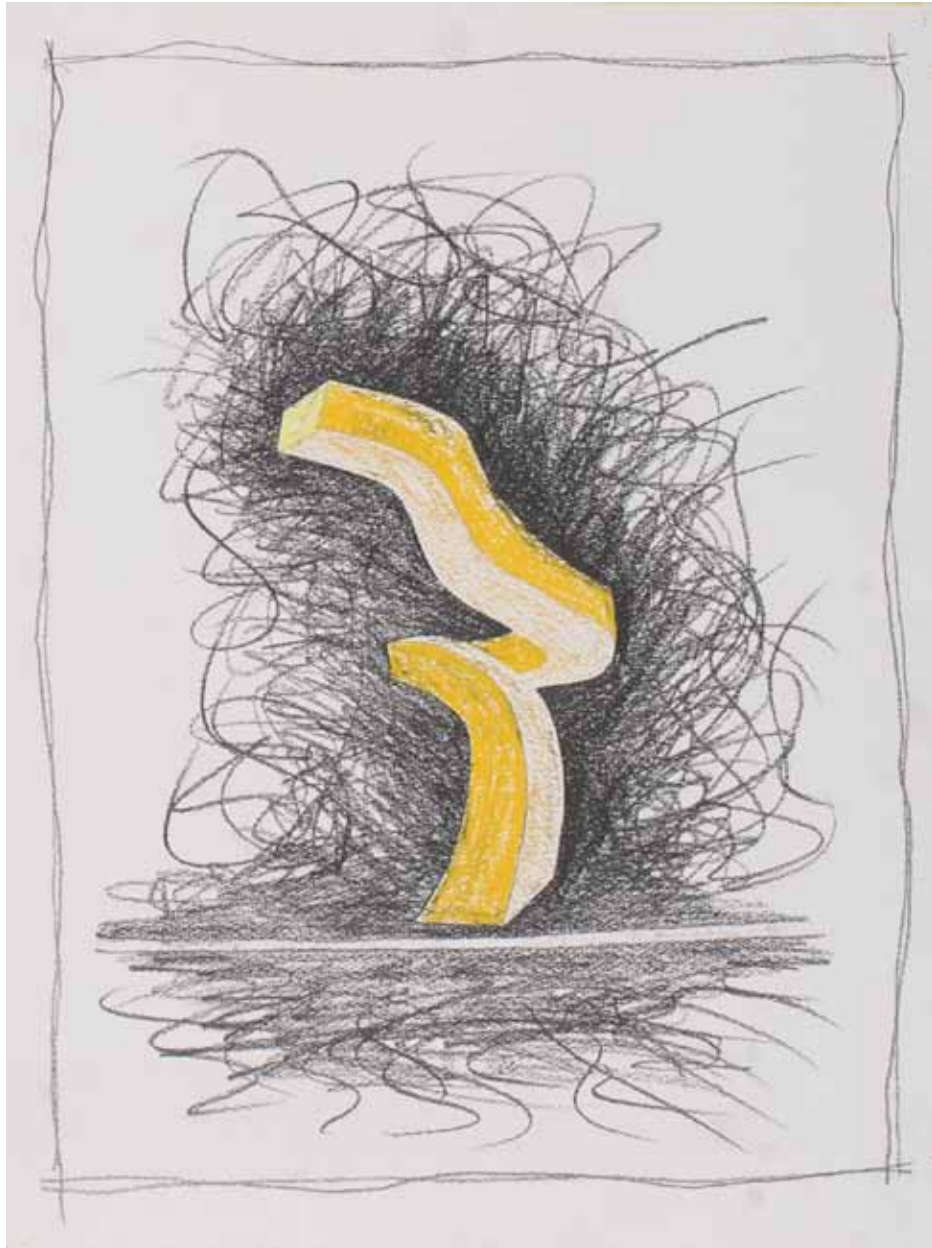


Heart Lips 2008 40" x 30"



Pink Amour #2 2008 30" x 28"





Cosmic Twist 2008 23" x 17"

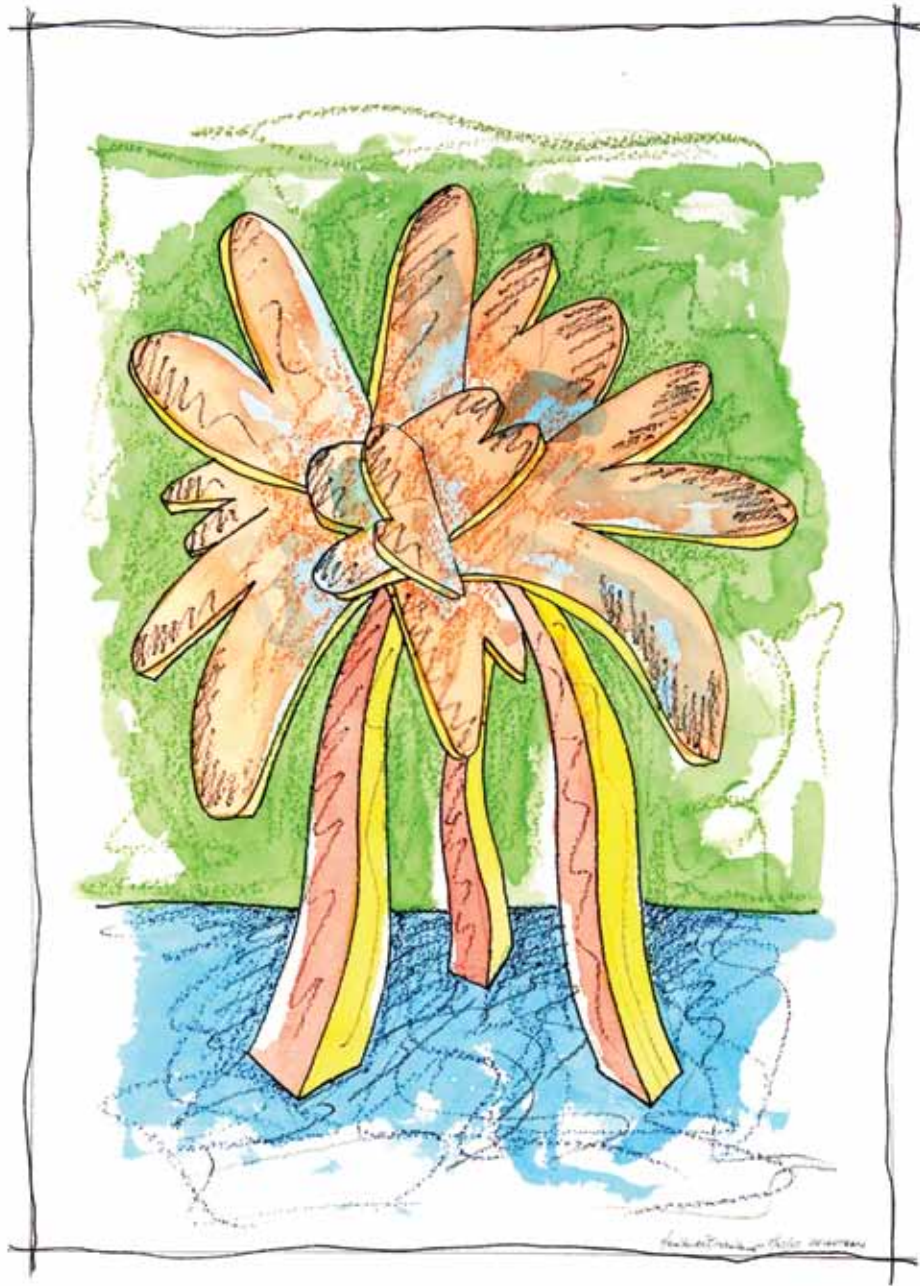






Alfred Zucchi

"Danubiana" 2013 14" x 20"



"Flower" 2013 30" x 22"



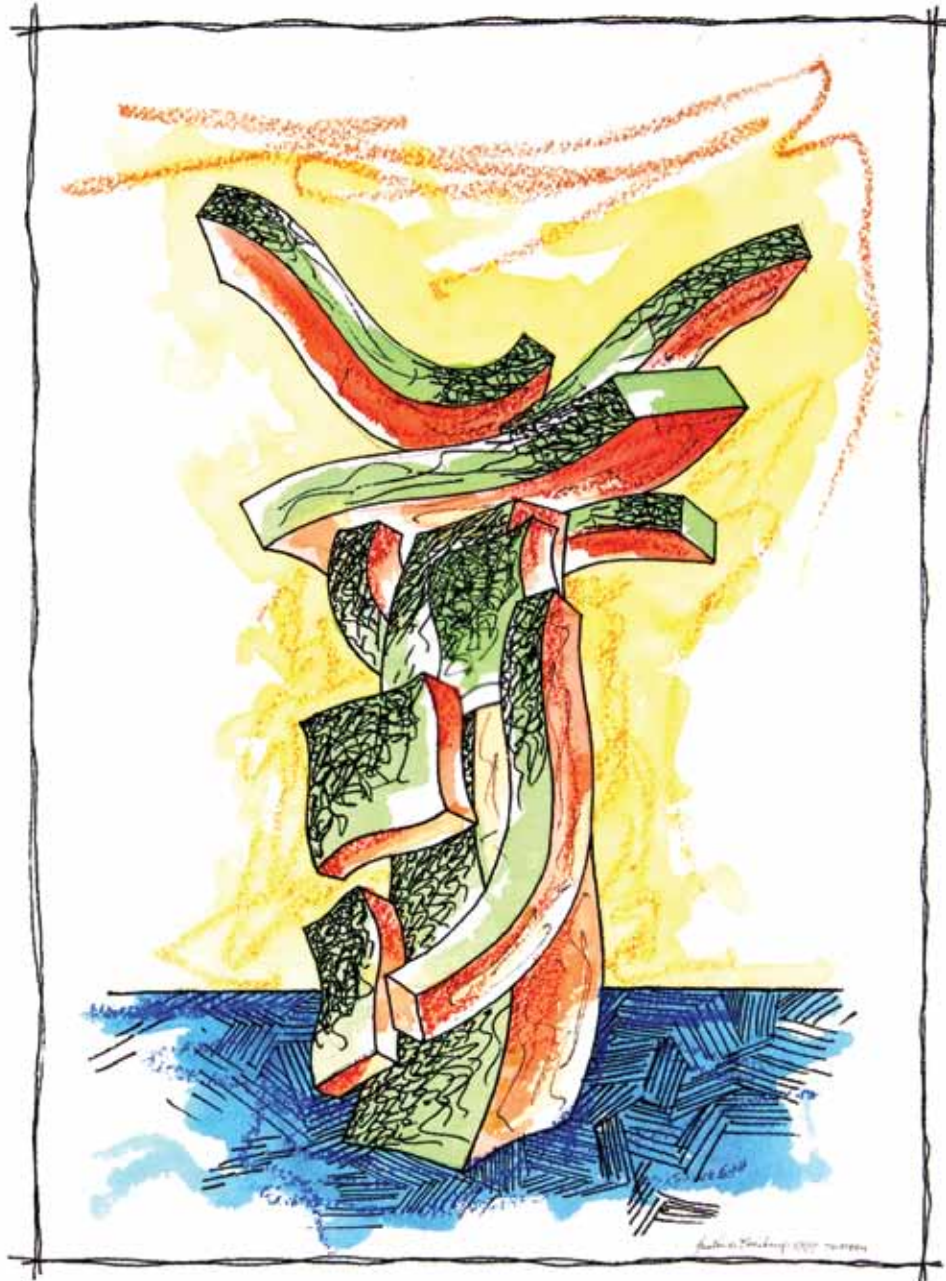
"Global Order" 2013 22" x 28"



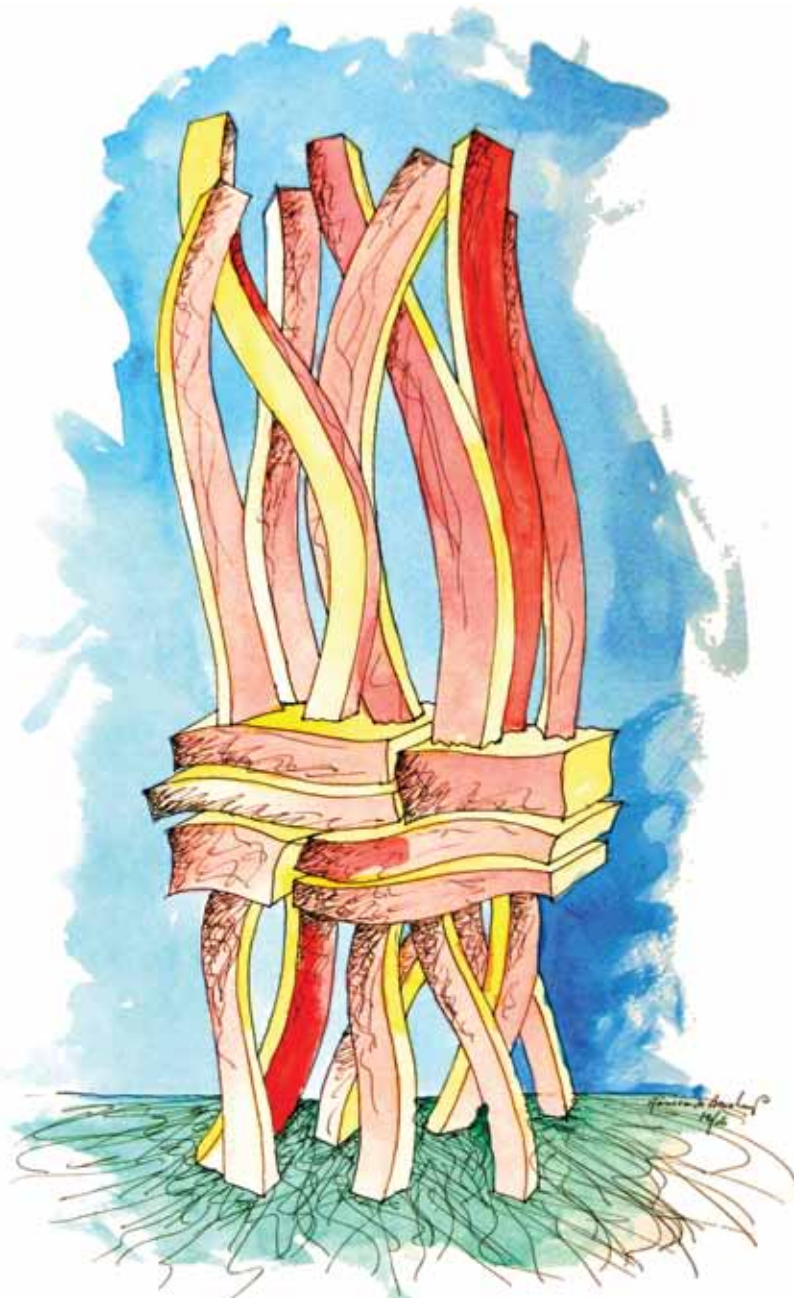
"Hoop" 2013 30" x 21"



"Hole in One" 2013 30" x 20"



"HVDB" 2013 30" x 22"



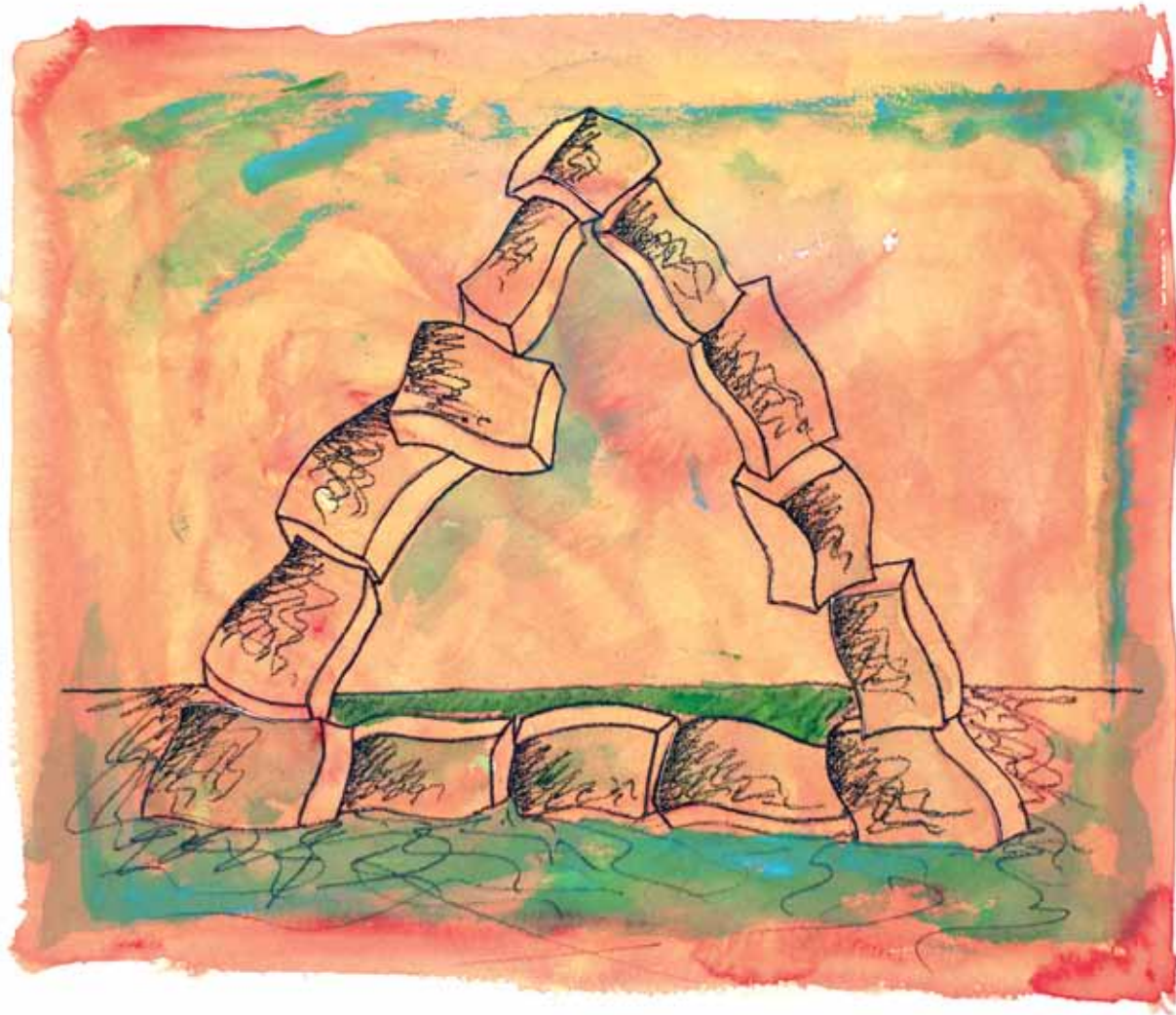
"Ode to Chamberlain" 2013 28" x 14"





"Portal Variation" 2013 14" x 20"

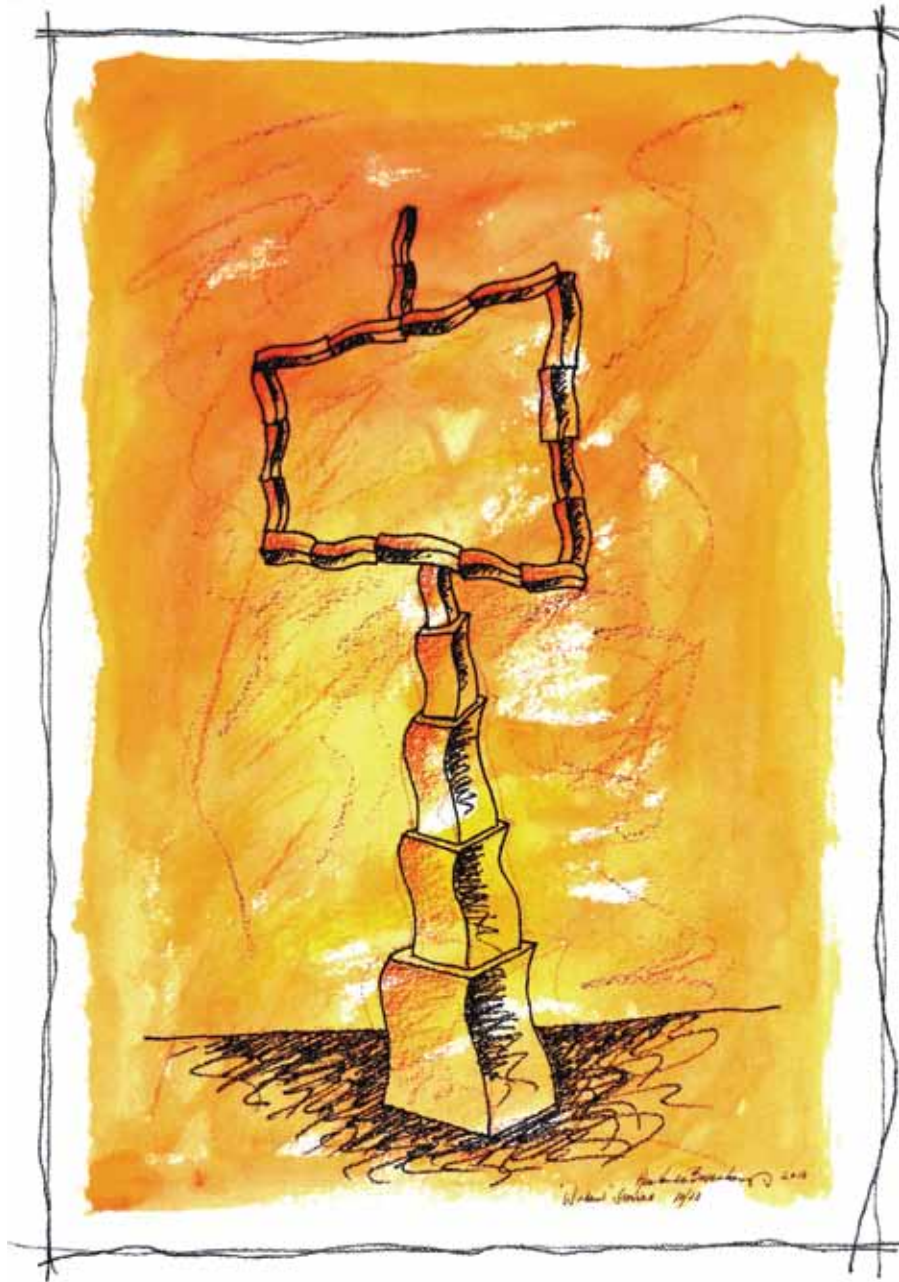




"Triangle" 2013 24" x 28"

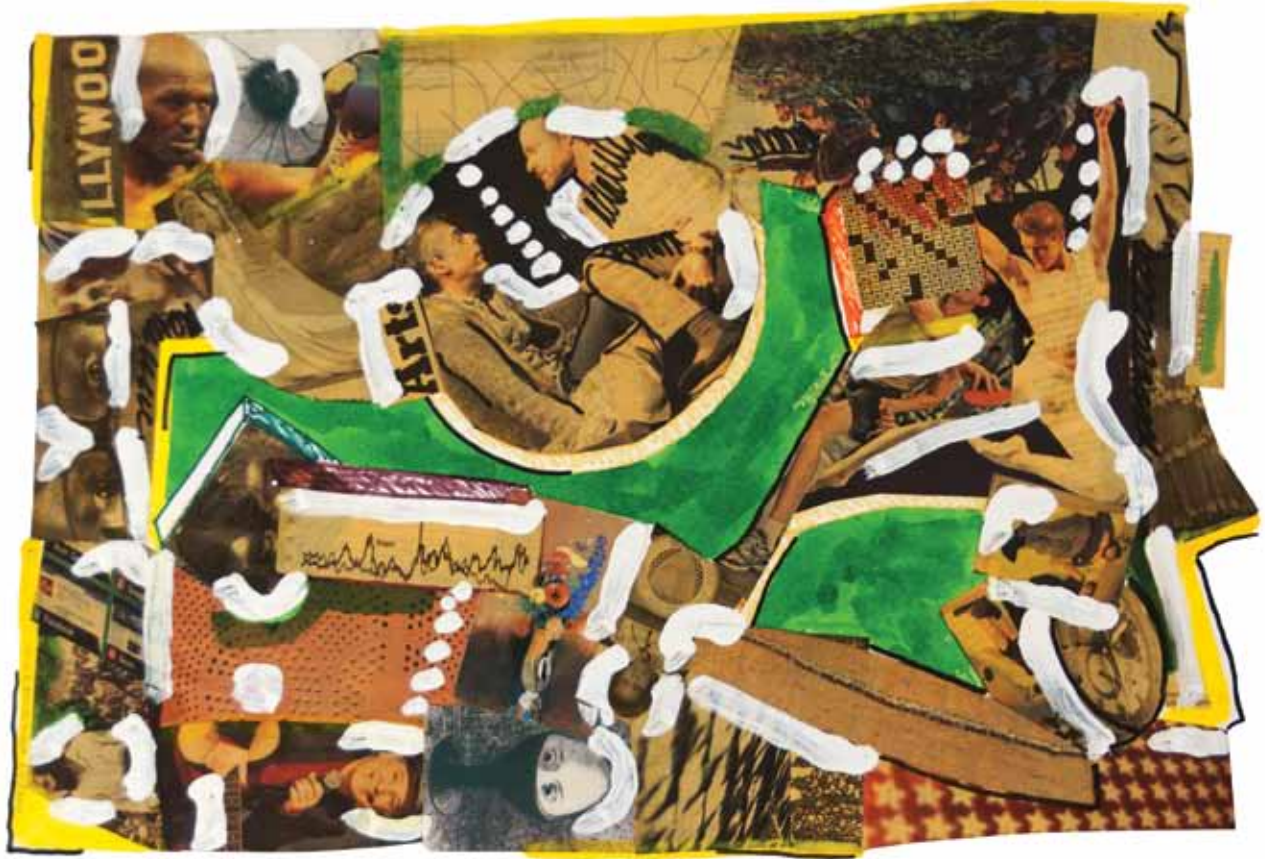


"Who Are You to Tell" 2013 20" x 14"



"Window with a View" 2013 28" x 20"





"Art in Hollywood" 2013 14" x 19"



"Bird's Eye" 2013 20" x 14"



"Black Free Marilyn" 2013 21" x 15"



"Self Portrait" 2013 22" x 18"



"Freedom Portal" 2013 14" x 20"



"Parachute Menhirl" 2012 17" x 14"



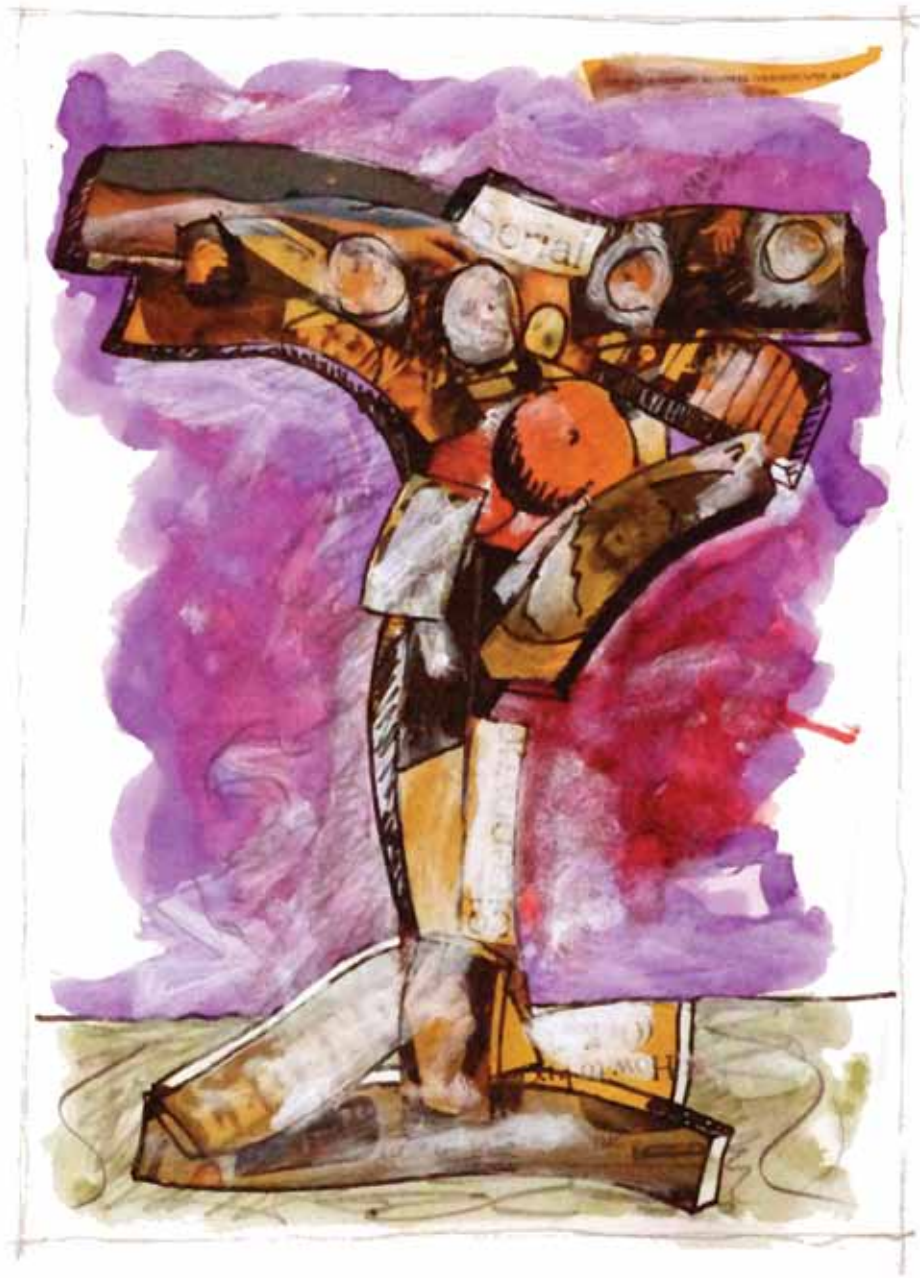
"Cat's Cradle" 2012 19" x 29"



"Sandy Thrashing" 2013 22" x 16"



"Stacking Tree" 2013 20" x 14"



"Thursday April Fourteen" 2013 19" x 14"



"Turkey" 2013 36" x 24"



"Basquiat Portrait" 2014 25" x 37"



"She" 2014 26" x 22"





"Self Portrait" 2014 31" x 21"



"Whole World In His Hands" 2014 29" x 21"



"Shyam Das" 2014 21" x 25"



Gallery Representation

Baker Sponder Gallery

608 Banyan Trail
Boca Raton, FL 33431
561.241.3050
www.bakerspondergallery.com

Bernarducci.Meisel Gallery

37 west 57th Street
New York, New York
212.593.3757
www.bernarducci.meisel.gallery.com

Mark Borghi Fine Art

NEW YORK
52 E 76th Street,
New York, New York 10021
212.439.6425

BRIDGEHAMPTON

2426 Main Street,
Bridgehampton, New York 11932
631.537.7245

PALM BEACH

255 Worth Avenue
Palm Beach, Florida 33480
561.328.9504
www.borghi.org

Ron Cavalier Gallery

GREENWICH
405 Greenwich Avenue
Greenwich, Connecticut 06830
203.869.3664

NANTUCKET

34 Main Street
Nantucket, Massachusetts 02554
508.325.4405
www.cavaliergalleries.com

Louis K. Meisel Gallery

141 Prince Street
New York, New York 10012
212.677.1340
www.meisलगallery.com

Gary Nader Fine Art

62 NE 27th Street
Miami, FL 33137
305.576.0256
www.garynader.com

Philippe Staib Gallery

m50, 4-102 Moganshon Rd.
Shanghai, China
86 21 6298 0729
www.philippestaibgallery.com

Samuel Lynne Galleries

1105 Dragon Street
Dallas, TX 75207
214 965.9027
www.samuellynnne.com

Sculpturesite, Inc.

23588 Arnold Drive
Sonoma, CA 95476
707.933.1300
www.sculpturesite.com

Vincent Vallarino Fine Art

120 East 65th Street
New York, NY 10021
212.628.0722
www.vallarinoart.com

Elena Zang Gallery

3671 Route 212
Woodstock, NY 12407
845.679.5432
www.eleazang.com

BRIEF BIO

Hans Van de Bovenkamp is an architectural designer and a sculptor. He has earned an international reputation over the past 50 years for designing, fabricating, installing and maintaining unique sculptures and fountains in collaboration with architects and designers. His works can be seen in public, civic, corporate and private collections. He has executed over 100 commissions.

ARTIST STATEMENT

"For me, making sculpture is both a spiritual and an artistic act. The studio is my playground, my laboratory, my sanctuary, where I practice and experiment with sculptural ideas. When I am working I am truly living in the present moment: focused and aware of choices as I make them, functioning in an elevated state between the conscious and the subconscious. Over time, I have been fortunate to gather together enough skill and vision to realize my ideas as they have come into my heart. Art for me is a way of life, not just a passion."

Selected Solo Exhibitions

- 2013 Adelphi University, Garden City, NY
- 2013 Samuel Lynne Gallery, Dallas, Texas
- 2011 Louis Meisel Gallery, New York, New York
- 2011 Bernarducci Meisel Gallery, New York, New York
- 2008 Goldman Warehouse, Wynwood District, Florida
- 2007 Sculpturesite Gallery, San Francisco, California
- 2007 Basel Miami Art Fair, Goldman Warehouse, Miami, Florida
- 2007 Basel Miami Art Fair, Gary Nader Fine Art, Miami, FL
- 2006 Danubiana Meulensteen Museum, Bratislava, Slovakia
- 2005-06 Grounds for Sculpture, Hamilton, New Jersey
- 2003 Louis Meisel Gallery, New York, New York
- 2003 Bernarducci Meisel Gallery, New York, New York
- 2003 Sagaponack Sculpture Fields, New York, New York
- 1996 Michener Museum, Doylestown, Pennsylvania
- 1996 Camino Real Gallery, Boca Raton, Florida
- 1994 Quietude Gallery, East Brunswick, New Jersey
- 1993 Elaine Benson Gallery, Bridgehampton, New York
- 1992 Shidoni Contemporary Gallery, Tesuque, NM
- 1981 Tiffany's, New York, New York
- 1981 University of Missouri, Columbia, Missouri
- 1979 Sculpture Center, New York, New York
- 1976 Brooklyn Borough Hall, New York, New York
- 1976 Arnot Art Museum, Elmira, New York
- 1970 Jacksonville Children's Museum, Jacksonville, Florida
- 1968 10 Downtown, New York, New York
- 1965 Glassboro State College, Glassboro, New Jersey
- 1963 New York University, New York, New York
- 1961 University of Michigan, Ann Arbor, Michigan

Selected Group Exhibitions

- 2014 Philippe Staib Gallery, Taipei City, Taiwan
- 2014 Art Sarasota, Seafare, Sarasota, Florida
- 2013 Season of Sculpture, Sarasota Marine Park, Florida
- 2012 Mark Borghi Gallery, Bridgehampton, New York
- 2011 Art Fair, Shanghai, China
- 2011 Gary Nader, Miami, Florida
- 2009 Spanierman Gallery, East Hampton, NY
- 2009 ArtHampton, Bridgehampton, NY
- 2008 ArtHampton, Bridgehampton, NY
- 2007 40 Years of Central Park, Lincoln Center, NY, NY
- 2007 Pratt Institute, Brooklyn, NY
- 2005 Sculpturesite Gallery, San Francisco, CA
- 2000-04 City of Fort Lauderdale, Florida
- 2000-04 Arlene Bujese Gallery, East Hampton, New York
- 1996-11 Elena Zang, Woodstock, New York
- 1994-11 Cavalier Gallery, Greenwich, Connecticut
- 2003 Guild Hall Museum, East Hampton, New York
- 1999-09 Shidoni Contemporary Gallery, Tesuque, NM
- 1999 Long Beach Museum, Long Beach, New Jersey
- 1996 Stamford Museum, Stamford, Connecticut
- 1988-91 Shidoni Contemporary Gallery, Tesuque, NM
- 1988 Chicago Art Fair, Navy Pier, Chicago, Illinois
- 1987 Hudson River Museum, Sculptors Guild, Yonkers, NY
- 1984 Molly Barnes Gallery, Los Angeles, California
- 1982 Oakland Museum, Oakland, California
- 1969-99 Elaine Benson Gallery, Bridgehampton, New York
- 1978 PSI Contemporary Art Museum, Long Island City, NY
- 1978 Nassau County Art Museum, Roslyn Harbor, NY
- 1978 The United States Mission, New York, New York
- 1977 National Academy of Design, New York, New York
- 1976 American Institute of Arts & Letters, NY, NY
- 1973-76 Storm King Art Center, Cornwall, New York
- 1970 University of Connecticut, Storrs, Connecticut
- 1969 New York Sculptors Guild, Bryant Park, NY, NY
- 1968 Loeb Student Center, New York University, NY, NY
- 1968 Stamford Museum, Stamford, Connecticut
- 1964 Contemporary Arts Museum, Houston, Texas

Awards

- 2003 - Best Sculpture Award, Guild Hall, East Hampton, NY
- 1996-04 - Listing, Who Is Who in American Art
- 1996 - Sanctuary Design Competition, Omega Holistic Health Institute, Rhinebeck, New York
- 1976 - Exhibition, American Institute Arts & Letters, NY, NY
- 1976 - Nebraska Bicentennial Sculpture Competition, Sydney, Nebraska
- 1964 - Emily Lowe Sculpture Award, New York, New York

Selected Corporate Collections

- 2011 Louis Meisel, Watermill, New York
- 2009 Manhattan House, New York, New York
- 2005 Stamford, Connecticut (9 Fiddleheads)
- 2001 Corporate Business Park, Columbia, Maryland
- 1995 Litwin Building, Wall Street, New York, New York
- 1995 Goldman Properties, 110 Greene Street, NY, NY
- 1993 Mayer Collection, Denver, Colorado
- 1992 Hyatt Regency, Paris, France
- 1990 Marina Village, Alameda, California
- 1988 Amlie Realty Corporation, Chicago, Illinois
- 1986 Haverstraw Marina, Haverstraw, New York
- 1984 Christiania, Tarrytown, New York
- 1980 Litwin Building, 72nd & 2nd Ave., NY, NY
- 1977 Cargill, Minneapolis, Minnesota
- 1967 Gaslight Tower, Atlanta, Georgia
- 1966 Georgetown Plaza Building, New York, New York
- 1966 Levitt Headquarters, Lake Success, New York

Selected Major Commissions

- 1966 Mushroom Water Garden Copper 12' x 60'
Levitt Headquarters Lake Success, NY
- 1984 Crescendo 24' x 16' x 6' Tarrytown, NY
- 1986 Mariner's Gateway 35' x 34' x 12' Haverstraw, NY
- 1988 Spring Mist stainless steel 30' Itasca, IL
- 1991 Menos stainless steel 25' x 10' 6'
Texas A&M university
- 2001 Trinity 26' x 24' stainless steel
Corporate Office Properties Columbia, MD
- 2005 Flight bronze 27' x 25' diameter
R.J. Kirk Roanoke, VA
- 2007 Stella in the Wind 2007 12' x 15' x 15'
Bridgehampton, NY
- 2008 Green Thunder 14' x 8' x 3' Meisel Watermill, NY
- 2012 Long Island Sound Portal" painted bronze
12' x 4' x 8' Greenwich CT

Museum Collections

- Grounds for Sculpture, Hamilton, New Jersey
- Danubiana Meulensteen Museum, Bratislava, Slovakia
- Miami University Art Museum, Oxford, Ohio
- Boca Raton Museum of Art, Boca Raton, Florida
- Estate of Nelson Rockefeller, Kykuit, New York
- Lowe Art Museum, Coral Gables, Florida
- Butler Institute of American Art, Youngstown, Ohio

Municipal Collections

- 2011 Jing'an Park, Shanghai, China
- 2001 City of Toledo, Ohio
- 1999 Mt. Sinai Hospital, Miami, Florida
- 1992 Myriad Gardens, Oklahoma City, Oklahoma
- 1988 City of Ormond Beach, Florida
- 1988 City Hall, Voorhees, New Jersey
- 1983 State Capitol Plaza, Lansing, Michigan
- 1976 I-80 Nebraska Bicentennial, Sidney, Nebraska
- 1972 Jewish Institute for Geriatrics Care,
Lake Success, New York

University Collections

- City University of New York,
- Staten Island Community College, New York, New York
- Stony Brook University, Stony Brook, New York
- Texas A&M University, College Station, Texas
- Towson University Art Center, Towson, Maryland
- University of Missouri, Columbia, Missouri
- Wheeling Jesuit University, Wheeling, West Virginia

